



AIR DETACHABLE

35ADG2X53, 40ADG3X53

SHOWN WITH OPTIONAL EQUIPMENT

Grote Ultra Blue lighting system with standard LED lights that includes warranty on all harnesses and lights.

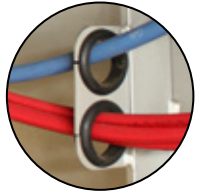


Chassis is steel shot blast, painted with PPG industrial coating and oven-baked for 75 minutes at 145 degrees.

Gooseneck stinger arm control box



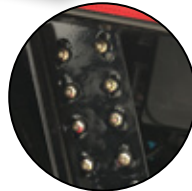
Hub alert heat detection system on the axles.



All electrical components are secured to chassis through rubber grommets. This allows easy access for maintenance and reduces cost over life span of the trailer.



Gooseneck stinger arm.



Central crease system.

Aluminum slideouts.



Adjustable ride height, load gauge and air suspension dump valve.

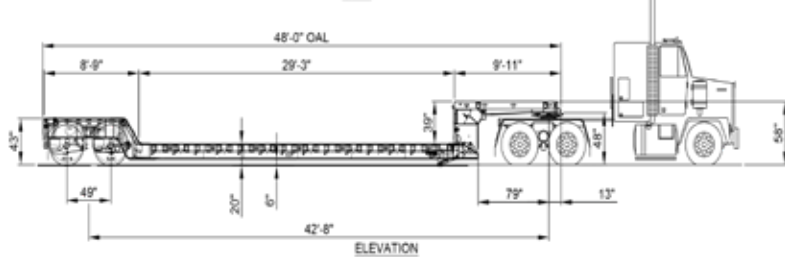
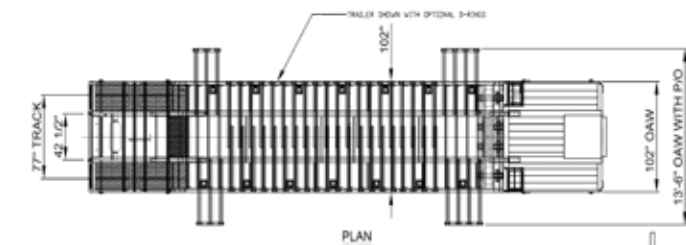


Rev. 0



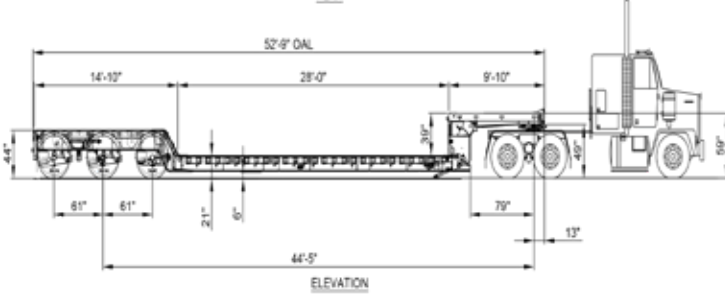
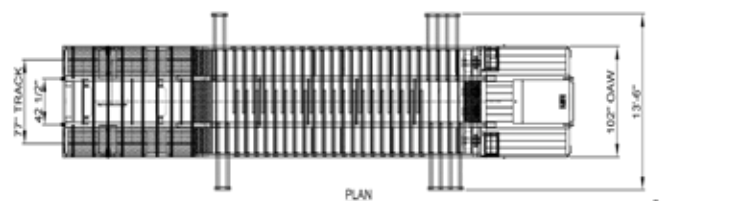
D I F F E R E N T B Y D E S I G N

29 Hawkins Road, Centreville, NB E7K 1A4 · T 506 276-4567 · F 506 276-4380 · sales@bwstrailers.com



MODEL: 35ADG2X48 AGNR
35 TON TANDEM, 48 FT. AGRI - NON RTAC
NOTE: ALL DIMENSIONS ARE LOADED & NOMINAL

*weights shown in lbs.	GVWR	Rating in 4'	Rating in 8'	Rating in 10'	Rating in 15'	Weight
35ADG2X48	87,000	37,400	48,000	70,000	78,000	17,760



MODEL: 40ADG2X53 AGNR
40 TON TANDEM 53 FT. AGRI - NON RTAC
NOTE: ALL DIMENSIONS ARE LOADED & NOMINAL

*weights shown in lbs.	GVWR	Rating in 4'	Rating in 10'	Rating in 16'	Weight
40ADG3X53 AGNR	100,000	43,000	55,000	80,000	21,000

WARRANTY

1 YEAR BUMPER TO BUMPER

- Warrants that the specified BWS equipment will be free from defects in materials and workmanship, under normal use and service, for the period of the first 12 months of regular service post the date-in-service. This warranty extends only to the original first owner. It is not transferable and applies only to OEM installed components and equipment.

3 YEAR PAINT AND FINISH

- Steel shot blast
 - Industrial top coat and oven baked finish is warranted against defects in materials and workmanship.
 - Custom colors are subject to a 1 year warranty only.
 - Does not cover against general wear and tear such as stone chips or fade as of 2016.
- *CONDITIONS MAY APPLY.**

5 YEAR SUPER STRUCTURE

- Warrants the trailer main frame beams or "super-structure" (consisting of the top and bottom flanges, and their connecting web) to be free from defects in materials and workmanship, under normal use and service for a period of 5 years from the date-in-service only to the original first owner.

SUSPENSION

- Ridewell holds a 5 year warranty on all beams and bushings.

6 YEAR BRAKES

- Haldex Platinum Warranty to the 1st owner Life Seal equipped Haldex ABS component brake system slack adjusters/brake chambers (Haldex LifeSeal)/ABS system ECM & control valve. 6 year or one (1) million mile warranty against defects in material or workmanship.

7 YEAR LIGHTING

- Grote Ultra Blue
- 7 year warranty on the male pin harness
- 10 year warranty on tail lights

ADDITIONAL OPTIONS

ACCESSORIES

- CENTRAL GREASE SYSTEM, FULL INSTALLED ON PASSENGER SIDE.
- IN FLOOR CHAIN BOX AT REAR OF MAIN DECK, DECKPLATE COVER INCLUDED.
- PINTLE HITCH ASSEMBLY IN REAR SKIRT WITH 36 IN. MUDFLAP AND 7 PIN RV PLUG. USED TO HAUL WAGON WITH COMBINE HEADER.
- REMOVABLE HOLLAND FW001 5TH WHEEL AT REAR. USED FOR HAULING EMPTY GRAIN TRAILER.
- D SIGN - REMOVABLE PLYWOOD.

GOOSENECK

- ALL KERUING / APITONG FLOOR ON GOOSENECK.

LIGHTING / ELECTRICAL

- 7 PIN RV PLUG TO REPLACE THE 4 PIN AT REAR.
- AMBER FLASHING STROBE LIGHTS. (MOUNTED IN BUMPER)
- EMERGENCY POWER SOURCE.
- FOUR PIN PLUG W/STROBE LIGHT POCKET AT REAR.
- LED 4 IN. WIDE LOAD LIGHTS PULLOUT STYLE. (SET OF 4)
- LED LIGHT ENHANCEMENT PACKAGE. (6 ADDITIONAL LIGHTS PER SIDE)
- STROBE LIGHT POCKET AT REAR.

LOAD SECUREMENT

- IN FLOOR FLUSH MOUNTED D-RINGS, CHAIN PULL OUTS, SIDE MOUNT D-RINGS, WINCHES

PAINT

- RED, YELLOW, CUSTOM.

RAMPS

- ALUMINUM RAMPS TO ACCESS REAR DECK. (PAIR)

SUSPENSIONS / AXLES

- AIR WEIGH SCALE.
- ALUMINUM WHEEL PACKAGE 22.5 (4 MACHINED, 4 POLISHED)
- ALUMINUM WHEEL PACKAGE 22.5 (4 STEEL, 4 POLISHED)
- MERITOR TIRE INFLATION SYSTEM BY TSI.