



EASTERN LOGGER NB/NS

46', 48' & 51' TRIDEM/QUAD - TAPER OR DROP FRAME

SHOWN WITH OPTIONAL EQUIPMENT

Chassis is steel shot blasted, painted with PPG industrial coating and oven-baked for 75 minutes at 145 degrees.

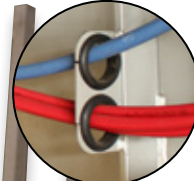
Grote Ultra Blue lighting system with standard LED lights that includes warranty on all harnesses and lights.

BWS fabricated log stakes.

All electrical components are secured to chassis through rubber grommets. This allows easy access for maintenance and reduces cost over life span of the trailer.

Loader ready.

Front & rear heavy duty fabricated log bunks.



Hub Alert heat detection system on the axles.

Self steer.

Fabricated 2 piece stake pocket.

Fabricated log bunks.



Fifth wheel coupler greasers.

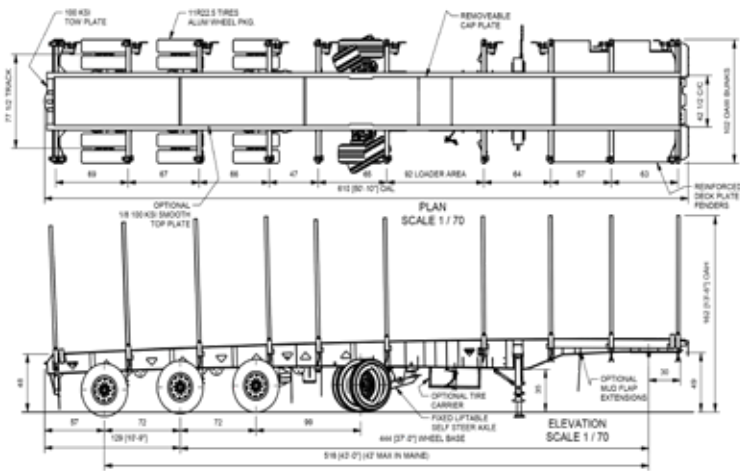


Rev. 0

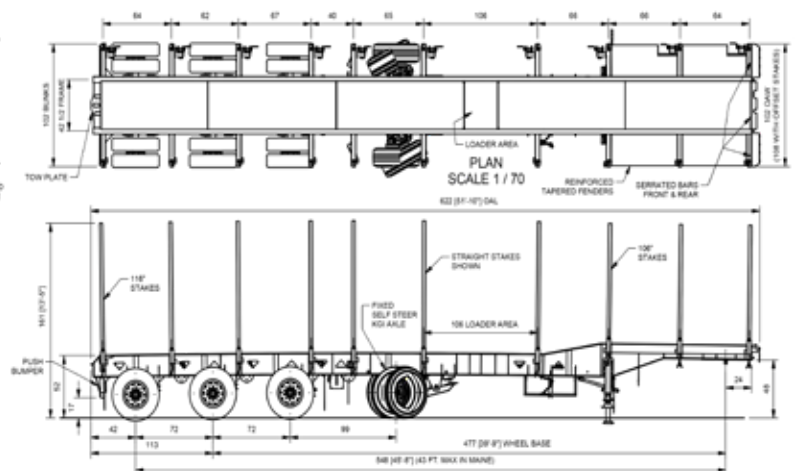


D I F F E R E N T B Y D E S I G N

29 Hawkins Road, Centreville, NB E7K 1A4 · T 506 276-4567 · F 506 276-4380 · sales@bwstrailers.com



51LF4X5T NB V2018
51 FT. QUAD 5 TIER TAPER FRAME 102 - 72



51LD4X5T-102-72 V2018
51 FT. QUAD 5 TIER DROP FRAME

WARRANTY

1 YEAR BUMPER TO BUMPER

- Warrants that the specified BWS equipment will be free from defects in materials and workmanship, under normal use and service, for the period of the first 12 months of regular service post the date-in-service. This warranty extends only to the original first owner. It is not transferable and applies only to OEM installed components and equipment.

3 YEAR PAINT AND FINISH

- Steel shot blast
 - Industrial top coat and oven baked finish is warranted against defects in materials and workmanship.
 - Custom colors are subject to a 1 year warranty only.
 - Does not cover against general wear and tear such as stone chips or fade as of 2016.
- *CONDITIONS MAY APPLY.*

5 YEAR SUPER STRUCTURE

- Warrants the trailer main frame beams or "super-structure" (consisting of the top and bottom flanges, and their connecting web) to be free from defects in materials and workmanship, under normal use and service for a period of 5 years from the date-in-service only to the original first owner.

SUSPENSION

- Ridewell holds a 5 year warranty on all beams and bushings.

6 YEAR BRAKES

- Haldex Platinum Warranty to the 1st owner Life Seal equipped Haldex ABS component brake system slack adjusters/brake chambers (Haldex LifeSeal)/ABS system ECM & control valve. 6 year or one (1) million mile warranty against defects in material or workmanship.

7 YEAR LIGHTING

- Grote Ultra Blue
- 7 year warranty on the male pin harness
- 10 year warranty on tail lights

ADDITIONAL OPTIONS

ACCESSORIES

- ADDITIONAL MUDFLAP 1 LG FLAP WITH BRACKETS AT REAR.
- ADDITIONAL MUDFLAP 4 FLAPS WITH BRACKETS AT LANDING GEAR.
- ADDITIONAL MUDFLAP SET WITH BRACKETS ON FRONT SUSPENSION.
- POLISHED STAINLESS PACKAGE.
- TIRE CARRIER ONLY.

DECK

- 108 IN. BUNK.
- 108 IN. OFFSET BWS FABRICATED STAKES.
- ALUMINUM DECK PLATE 10 IN. X 24 IN. EXTENSION, LOCATED AT REAR OF FRONT FENDERS.
- FIFTH WHEEL GREASERS.
- GALVONIZED STAKES
- T100 FLOOR & FENDERS

LIGHTING / ELECTRICAL

- ADDITIONAL REAR LED LIGHT PACKAGE. (4 IN A ROW TAIL LIGHT BAR)
- AIR LINE RTO RUN TO FRONT HEADER FOR AIR GAUGE IN TRUCK CAB.
- LED LIGHT ENHANCEMENT PACKAGE. (6 ADDITIONAL LIGHTS PER SIDE)

LOAD SECUREMENT

- 1/4 IN. CABLE
- STRAPS (3 IN. X 30 FT. WITH CHAIN AND HOOK)

PAINT

- RED, CUSTOM.

SUSPENSION / AXLES

- DUAL SHOCK SYSTEM.
- 30,000 RIDEWELL SUSPENSION WITH LIFT AXLE OPTIONS.
- 22.5 TIRES
- ALUMINUM WHEEL PACKAGE 22.5 **OR** 24.5 (12 MACHINED)
- ALUMINUM WHEEL PACKAGE 22.5 **OR** 24.5 (6 MACHINED, 6 POLISHED)
- ALUMINUM WHEEL PACKAGE 22.5 **OR** 24.5 (6 STEEL, 6 POLISHED)
- PREDRILLED AXLES FOR CENTRAL TIRE INFLATION SYSTEM.