



HYDRAULIC DETACHABLE

40HDG3X AG, 50HDG3X AG

SHOWN WITH OPTIONAL EQUIPMENT

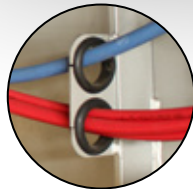
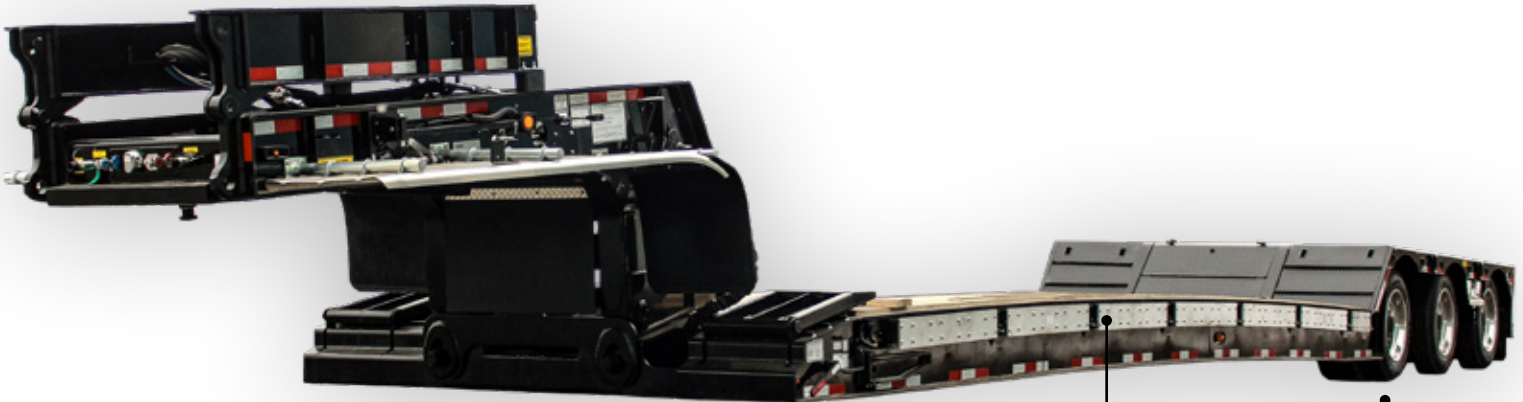
Flip neck ready.

Hydraulic neck controls are easily accessible for raising and lowering trailer deck.

Aluminum rear ramps.

Central grease system.

Adjustable ride height, load gauge and air suspension dump valve.



Grote Ultra Blue lighting system with standard LED lights that includes warranty on all harnesses and lights.

All electrical components are secured to chassis through rubber grommets. This allows easy access for maintenance and reduces cost over life span of the trailer.

Chassis is steel shot blasted, painted with PPG industrial coating and oven-baked for 75 minutes at 145 degrees.

Aluminum slide outs.



Hub Alert heat detection system on the axles.

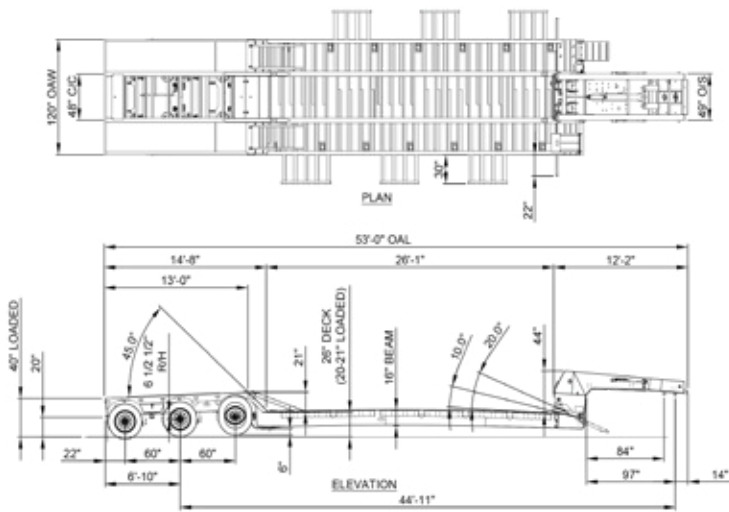


Rev. 0



D I F F E R E N T B Y D E S I G N

29 Hawkins Road, Centreville, NB E7K 1A4 · T 506 276-4567 · F 506 276-4380 · sales@bwstrailers.com

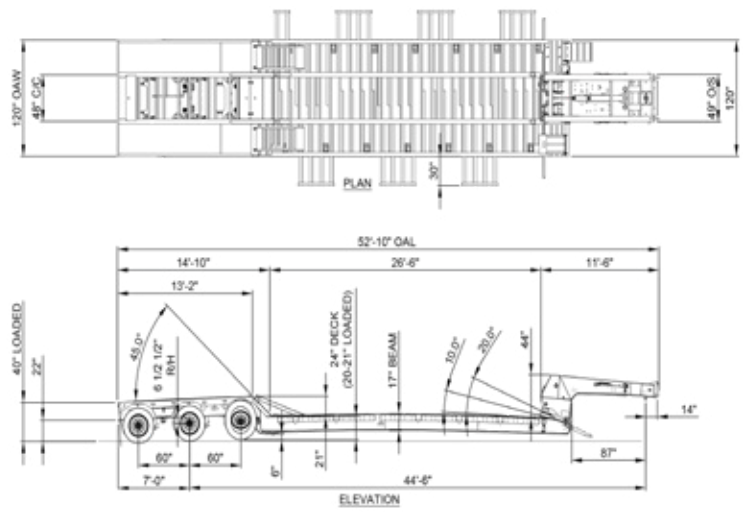


MODEL: 40HDG3X AG

40 TON TRIDEM AGRICULTURE, 2017

NOTE: ALL DIMENSIONS ARE LOADED & NOMINAL.

*Weights shown in lbs.	GVWR	Rating in 4' on side rails only	Rating in 4' on side rail & main beams	Rating in 10' side rails only	Rating in 10' on side rails & main deck	Rating in 16'	Rating evenly distributed	Weight
40HDG3X AG	80,000	26,400	43,000	37,400	55,000	80,000	80,000	24,190



MODEL: 50HDG3X AG

50 TON TRIDEM AGRICULTURE, 2017

NOTE: ALL DIMENSIONS ARE LOADED & NOMINAL.

*Weights shown in lbs.	GVWR	Rating in 4' on side rails only	Rating in 4' on side rail & main beams	Rating in 10' side rails only	Rating in 10' on side rails & main deck	Rating in 16'	Rating evenly distributed	Weight
50HDG3X AG	100,000	30,000	49,000	43,000	63,000	100,000	10,000	25,203

WARRANTY

1 YEAR BUMPER TO BUMPER

- Warrants that the specified BWS equipment will be free from defects in materials and workmanship, under normal use and service, for the period of the first 12 months of regular service post the date-in-service. This warranty extends only to the original first owner. It is not transferable and applies only to OEM installed components and equipment.

3 YEAR PAINT AND FINISH

- Steel shot blast
 - Industrial top coat and oven baked finish is warrantied against defects in materials and workmanship.
 - Custom colors are subject to a 1 year warranty only.
 - Does not cover against general wear and tear such as stone chips or fade as of 2016.
- *CONDITIONS MAY APPLY.**

5 YEAR SUPER STRUCTURE

- Warrants the trailer main frame beams or "super-structure" (consisting of the top and bottom flanges, and their connecting web) to be free from defects in materials and workmanship, under normal use and service for a period of 5 years from the date-in-service only to the original first owner.

SUSPENSION

- Ridewell holds a 5 year warranty on all beams and bushings.

6 YEAR BRAKES

- Haldex Platinum Warranty to the 1st owner Life Seal equipped Haldex ABS component brake system slack adjusters/brake chambers (Haldex LifeSeal)/ABS system ECM & control valve. 6 year or one (1) million mile warranty against defects in material or workmanship.

7 YEAR LIGHTING

- Grote Ultra Blue
- 7 year warranty on the male pin harness
- 10 year warranty on tail lights

ADDITIONAL OPTIONS

ACCESSORIES

- CENTRAL GREASE BANK SYSTEM.
- POLISHED STAINLESS PACKAGE.
- D SIGN - REMOVABLE PLYWOOD.

DECK

- ALL KERUING / APITONG FLOOR.
- ALUMINUM REAR RAMPS.
- DOCK PROTECTION.

GOOSENECK

- 27 IN. KING PIN TO KING PIN, FLIP KING PIN FOR TRI DRIVE TRUCK.
- 45 IN. KING PIN TO KING PIN, FLIP KING PIN FOR SINGLE AXLE JEEP, INCLUDES HOSING/ WIRING.
- 76 IN. KING PIN TO KING PIN, FLIP KING PIN FOR TANDEM AXLE JEEP, INCLUDES HOSING/ WIRING.
- FRONT FENDERS FOR GOOSENECK. (TOBOGGAN STYLE WITH 1 PAIR MUDFLAPS)
- SELF CONTAINED POWER UNIT, 2 STAGE PUMP. W/DIVERTER VALVE & COVER.
- AIR OPERATED LOCK PIN IN GOOSENECK.

LIGHTING / ELECTRICAL

- ADDITIONAL TURN SIGNALS AT REAR.
- AMBER FLASHING STROBE LIGHTS. (MOUNTED IN BUMPER)
- EMERGENCY POWER SOURCE.
- LED LIGHT ENHANCEMENT PACKAGE. (6 ADDITIONAL LIGHTS PER SIDE)
- LED WIDE LOAD LIGHTS 2.5 IN. (SET OF 4), 2 PULL OUT (REAR) 2 SWING OUT (FRONT)
- LED WIDE LOAD LIGHTS 4 IN. (SET OF 4), 2 PULL OUT, 2 SWING OUT
- STROBE LIGHT POCKET AT REAR.

LOAD SECUREMENT

- IN FLOOR FLUSH MOUNTED D-RINGS, CHAIN PULL OUTS, EXTRA SIDE MOUNT D-RINGS, WINCHES.
- ALL 20,000 LB RATED SLIDE OUTS. (PER FOUR LEG)

PAINT

- RED, YELLOW, CUSTOM.

SUSPENSIONS / AXLES

- ALUMINUM WHEEL PACKAGE 22.5 (6 MACHINED, 6 POLISHED)
- ALUMINUM WHEEL PACKAGE 22.5 (6 STEEL, 6 POLISHED)