



HYDRAULIC DETACHABLE HEAVY HAUL 55 & 60 TON SQUAREBACK OR BEAVERTAIL DESIGN

SHOWN WITH OPTIONAL EQUIPMENT



Booster ready.



Central grease system.

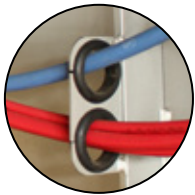
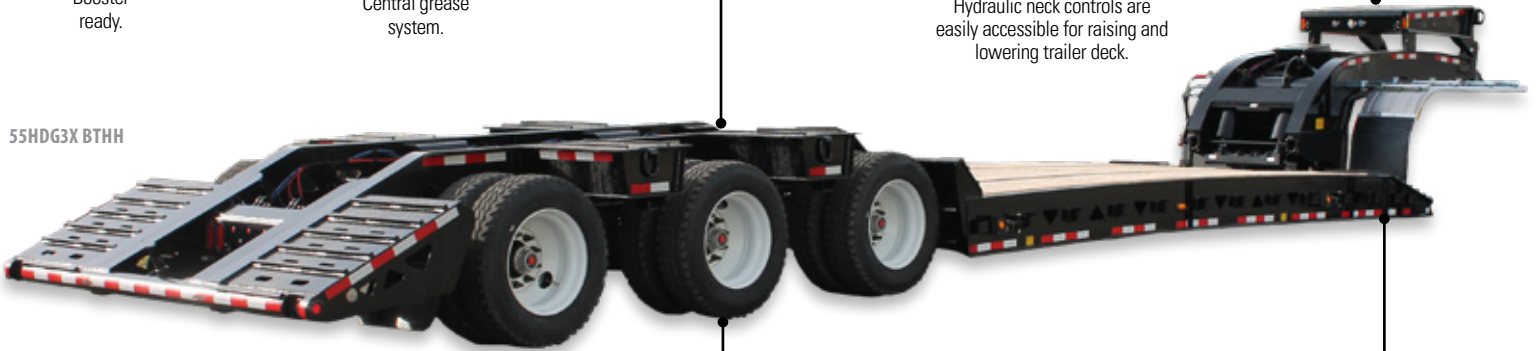
Chassis is steel shot blasted, painted with PPG industrial coating and oven-baked for 75 minutes at 145 degrees.



Hydraulic neck controls are easily accessible for raising and lowering trailer deck.

Flip neck ready.

55HDG3X BTHH



All electrical components are secured to chassis through rubber grommets. This allows easy access for maintenance and reduces cost over life span of the trailer.



Grote Ultra blue lighting system with standard LED lights that includes warranty on all harnesses and lights.



Hub alert heat detection system on the axles.



Adjustable ride height, load gauge and air suspension dump valve.



Tie down pocket.



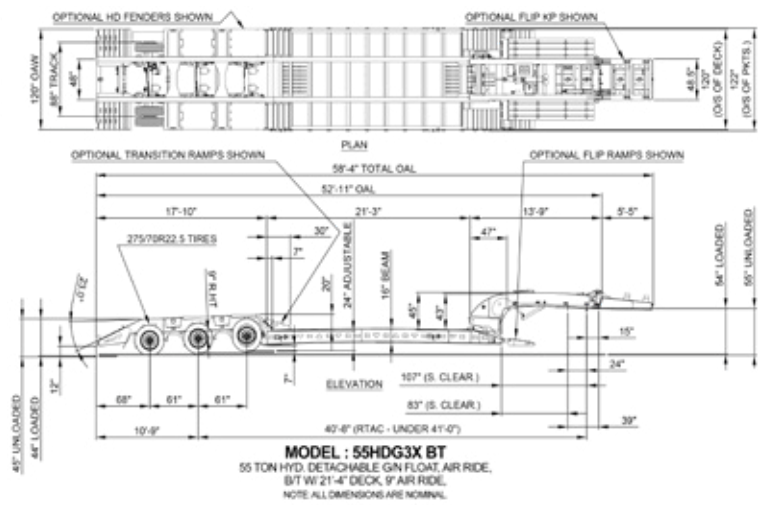
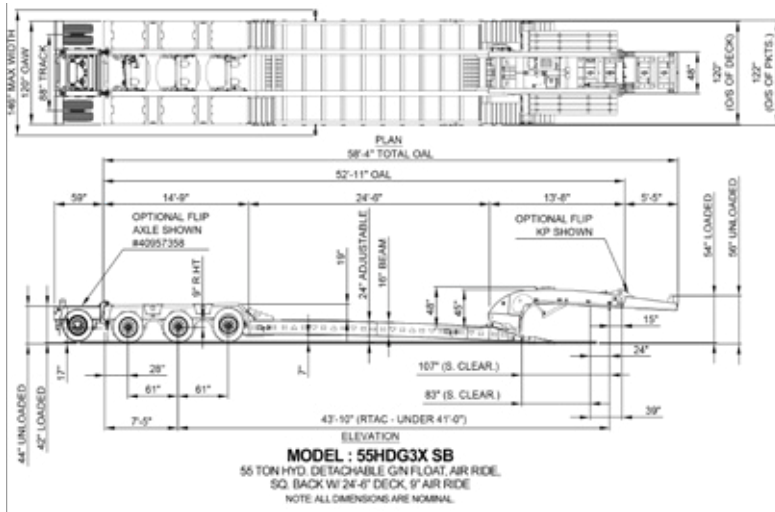
55HDG3X SBHH SHOWN WITH NITROGEN BOOSTER AND 40 TON JEEP

Rev. 0



D I F F E R E N T B Y D E S I G N

29 Hawkins Road, Centreville, NB E7K 1A4 · T 506 276-4567 · F 506 276-4380 · sales@bwstrailers.com



WARRANTY

1 YEAR BUMPER TO BUMPER

- Warrants that the specified BWS equipment will be free from defects in materials and workmanship, under normal use and service, for the period of the first 12 months of regular service post the date-in-service. This warranty extends only to the original first owner. It is not transferable and applies only to OEM installed components and equipment.

3 YEAR PAINT AND FINISH

- Steel shot blast
 - Industrial top coat and oven baked finish is warrantied against defects in materials and workmanship.
 - Custom colors are subject to a 1 year warranty only.
 - Does not cover against general wear and tear such as stone chips or fade as of 2016.
- *CONDITIONS MAY APPLY.**

5 YEAR SUPER STRUCTURE

- Warrants the trailer main frame beams or "super-structure" (consisting of the top and bottom flanges, and their connecting web) to be free from defects in materials and workmanship, under normal use and service for a period of 5 years from the date-in-service only to the original first owner.

SUSPENSION

- Ridewell holds a 5 year warranty on all beams and bushings.

6 YEAR BRAKES

- Haldex Platinum Warranty to the 1st owner Life Seal equipped Haldex ABS component brake system slack adjusters/brake chambers (Haldex LifeSeal)/ABS system ECM & control valve. 6 year or one (1) million mile warranty against defects in material or workmanship.

7 YEAR LIGHTING

- Grote Ultra Blue
- 7 year warranty on the male pin harness
- 10 year warranty on tail lights

ADDITIONAL OPTIONS

ACCESSORIES

- FLIP UP RAMPS TO FRONT DECK.
- POLISHED STAINLESS REAR TRIM PACKAGE.
- D SIGN - REMOVABLE PLYWOOD.

DECK

- MID RAMPS FROM DECK TO REAR BRIDGE.

GOOSENECK

- FRONT FENDERS FOR GOOSENECK. (TOBOGGAN FENDERS WITH 1 PAIR OF MUDFLAPS)
- FLIP GNK EXTENSION. (149 IN. AT 39 IN. PIN LOCATION: 173 IN. AT 15 IN.)
- HYDRAULIC KIT FOR MANUAL FLIP NECK EXTENSION.
- SELF CONTAINED POWER UNIT, 2 STAGE PUMP W/DIVERTER VALVE AND COVER.
- AIR OPERATED LOCK PIN IN GOOSENECK.

LIGHTING / ELECTRICAL

- LED WIDE LOAD LIGHTS. 2 1/2 IN. SWING STYLE (SET OF 4)
- AMBER FLASHING STROBE LIGHTS. (MOUNTED IN BUMPER)

LOAD SECUREMENT

- IN FLOOR FLUSH MOUNTED D-RINGS, EXTRA, SIDE MOUNT D-RINGS, SIDE MOUNT D-RINGS (45 DEGREE BEND)

PAINT

- RED, YELLOW, CUSTOM.

REAR SECTION

- ADDITIONAL MUDFLAPS WITH BRACKETS.
- LOAD BEARING REAR FENDERS.
- NON LOAD BEARING RUBBER BELTING REAR FENDERS.

SUSPENSION / AXLES

- 2S/1M ABS.
- ALUMINUM WHEEL PACKAGE 22.5 (6 MACHINED, 6 POLISHED)
- ALUMINUM WHEEL PACKAGE 22.5 (6 STEEL, 6 POLISHED)
- MANUAL LIFT AXLE (1 AXLE) TO INCLUDE SHUTOFFS ON AIR BAGS.