



HYDRAULIC DETACHABLE SQUAREBACK

51HDG3X SB, 55HDG3X SB

SHOWN WITH OPTIONAL EQUIPMENT

Flip neck ready on 55 ton.

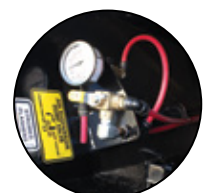
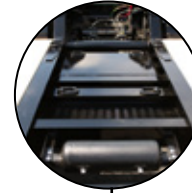
Central grease system.

Hydraulic neck controls are easily accessible for raising and lowering trailer deck.

Flip axle ready.

Bucket trough

Hub alert heat detection system on the axles.



Power unit ready.

All electrical components are secured to chassis through rubber grommets. This allows easy access for maintenance and reduces cost over life span of the trailer.

Grote Ultra blue lighting system with standard LED lights that includes warranty on all harnesses and lights.

Chassis is steel shot blasted, painted with PPG industrial coating and oven-baked for 75 minutes at 145 degrees.

Swing out style outriggers.

Adjustable ride height, load gauge and air suspension dump valve.

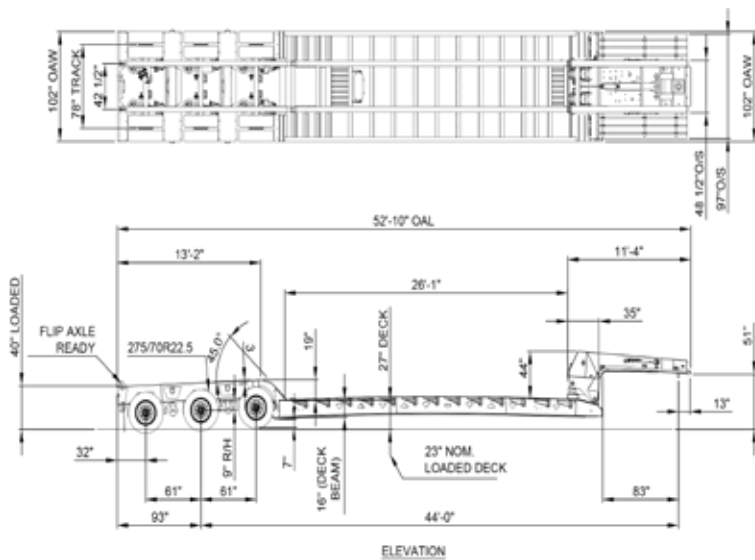


Rev. 0



D I F F E R E N T B Y D E S I G N

29 Hawkins Road, Centreville, NB E7K 1A4 · T 506 276-4567 · F 506 276-4380 · sales@bwstrailers.com

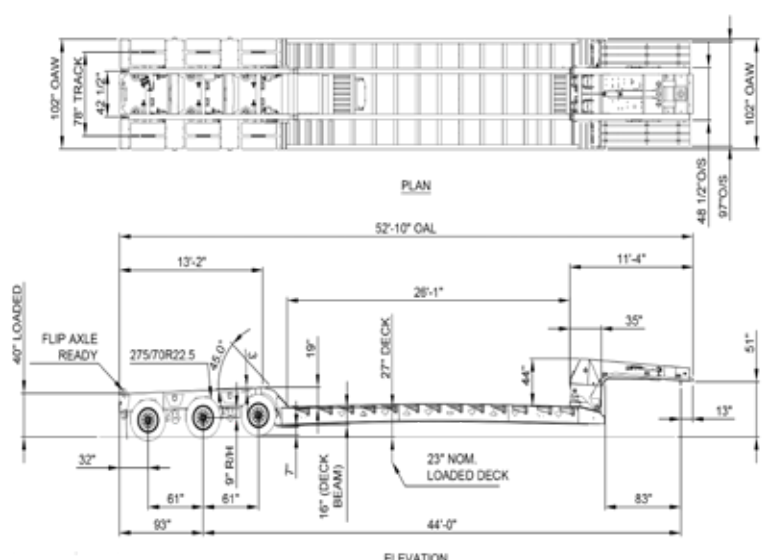


MODEL: 51HDG3X SB

51 TON TRIDEM SQUARE BACK - 102"

NOTE: ALL DIMENSIONS ARE LOADED & NOMINAL.

*weights shown in lbs	GVWR	Rating in 4' on side rails only	Rating in 4' on side rail & main	Rating in 10 ft side rails & main deck	Rating in 10 ft side rails & main deck	Rating in 16 ft	Rating evenly distributed	Weight
51HDG3X SB	122,500	45,400	61,200	60,700	71,400	102,000	102,000	20,650



MODEL: 55HDG3X SB

55 TON TRIDEM SQUARE BACK - 102"

NOTE: ALL DIMENSIONS ARE LOADED & NOMINAL.

*weights shown in lbs	GVWR	Rating in 4' on side rails only	Rating in 4' on side rail & main	Rating in 10 ft side rails & main deck	Rating in 10 ft side rails & main deck	Rating in 16 ft	Rating evenly distributed	Weight
55HDG3X SB	110,000	49,000	66,000	65,500	77,000	110,000	110,000	22,500

WARRANTY

1 YEAR BUMPER TO BUMPER

- Warrants that the specified BWS equipment will be free from defects in materials and workmanship, under normal use and service, for the period of the first 12 months of regular service post the date-in-service. This warranty extends only to the original first owner. It is not transferable and applies only to OEM installed components and equipment.

3 YEAR PAINT AND FINISH

- Steel shot blast
 - Industrial top coat and oven baked finish is warranted against defects in materials and workmanship.
 - Custom colors are subject to a 1 year warranty only.
 - Does not cover against general wear and tear such as stone chips or fade as of 2016.
- *CONDITIONS MAY APPLY.**

5 YEAR SUPER STRUCTURE

- Warrants the trailer main frame beams or "super-structure" (consisting of the top and bottom flanges, and their connecting web) to be free from defects in materials and workmanship, under normal use and service for a period of 5 years from the date-in-service only to the original first owner.

SUSPENSION

- Ridewell holds a 5 year warranty on all beams and bushings.

6 YEAR BRAKES

- Haldex Platinum Warranty to the 1st owner Life Seal equipped Haldex ABS component brake system slack adjusters/brake chambers (Haldex LifeSeal)/ABS system ECM & control valve. 6 year or one (1) million mile warranty against defects in material or workmanship.

7 YEAR LIGHTING

- Grote Ultra Blue
- 7 year warranty on the male pin harness
- 10 year warranty on tail lights

ADDITIONAL OPTIONS

ACCESSORIES

POLISHED STAINLESS REAR TRIM PACKAGE.

D SIGN - REMOVABLE PLYWOOD.

DECK

REMOVABLE OUTRIGGERS (13 PER SIDE) HEAVY DUTY.

GOOSENECK

BOOSTER **OR** FLIP NECK READY ON 55 TON.

27 IN. KING PIN TO KING PIN, FLIP KING PIN FOR TRI DRIVE TRUCK.

45 IN. KING PIN TO KING PIN, FLIP KING PIN FOR SINGLE AXLE JEEP, INCLUDES HOSING/ WIRING.

76 IN. KING PIN TO KING PIN, FLIP KING PIN FOR TANDEM AXLE JEEP, INCLUDES HOSING/ WIRING.

FRONT FENDERS FOR GOOSENECK. (TOBOGGAN STYLE WITH 1 PAIR MUDFLAPS)

SELF CONTAINED POWER UNIT, 2 STAGE PUMP W/DIVERter VALVE AND COVER.

AIR OPERATED LOCK PIN IN GOOSENECK.

LIGHTING / ELECTRICAL

AMBER FLASHING STROBE LIGHTS. (MOUNTED IN BUMPER)

LED WIDE LOAD LIGHTS 4 IN. (SET OF 4), 2 PULL OUT 2 SWING OUT.

LOAD SECUREMENT

IN FLOOR FLUSH MOUNTED D-RINGS, EXTRA SIDE MOUNT D-RINGS, SIDE MOUNT D-RINGS.

PAINT

RED, YELLOW, CUSTOM.

REAR SECTION

ADDITIONAL MUDFLAPS WITH BRACKETS. (PAIR)

NON LOAD BEARING RUBBER BELTING REAR FENDERS.

SUSPENSIONS / AXLES

2S/1M ABS.

AIR LIFT C/W CONTROL BOX.

ALUM. WHEEL PKG. 22.5 (6 MACHINED, 6 POLISHED)

ALUM. WHEEL PKG. 22.5 (6 STEEL, 6 POLISHED)