



HIGHWAY B-TRAIN

28 HBT + 32 HBT

SHOWN WITH OPTIONAL EQUIPMENT

J hooks.



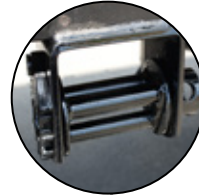
Lift Rings located on deck make it easy to stack trailers when necessary.



Rope hooks.



Winches.



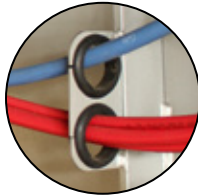
Air control box.



Tire chain hooks.



Hub Alert heat detection system on the axles.



All electrical components are secured to chassis through rubber grommets. This allows easy access for maintenance and reduces cost over life span of the trailer.



Grote Ultra Blue lighting system with standard LED lights that includes warranty on all harnesses and lights.



Aluminum toolbox.

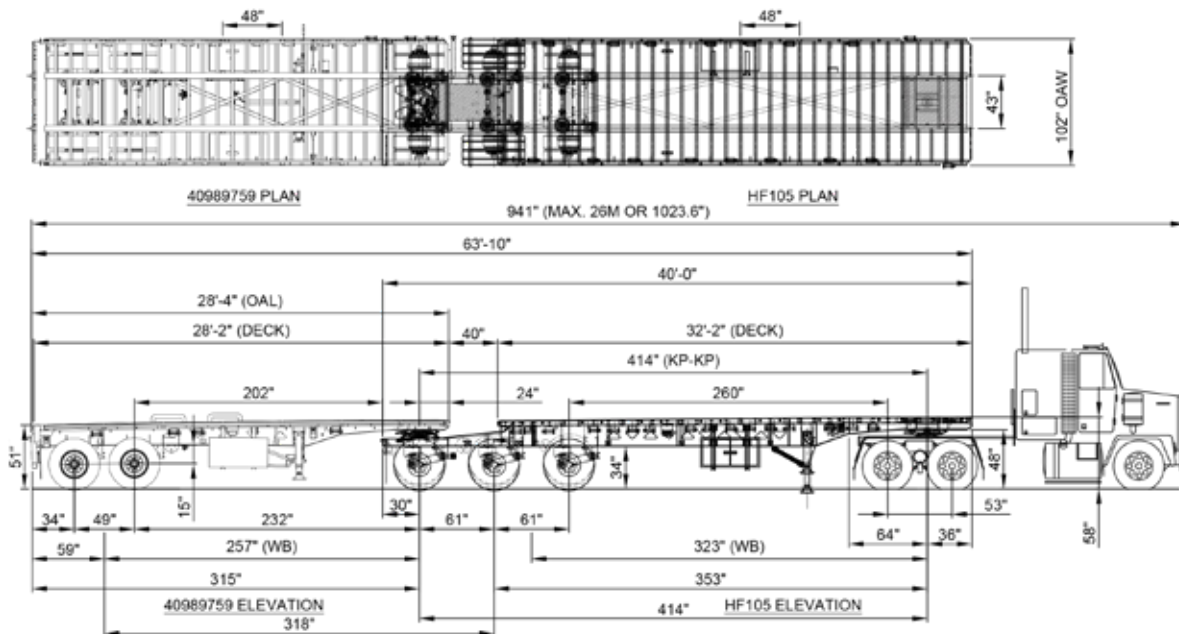


Rev. 0



D I F F E R E N T B Y D E S I G N

29 Hawkins Road, Centreville, NB E7K 1A4 · T 506 276-4567 · F 506 276-4380 · sales@bwstrailers.com



MODEL: 60HBT5X
60' B-TRAIN TRAILER
 NOTE: ALL DIMENSIONS ARE NOMINAL.

*weights shown in lbs.	GVWR	Rating in 4'	Rating in 8'	Rating in 10'	Rating in 16'	Weight
28HBT	90,000	32,000	40,000	45,000	50,000	8,377
32HBT	115,000	32,000	40,000	45,000	50,000	12,919

WARRANTY

1 YEAR BUMPER TO BUMPER

- Warrants that the specified BWS equipment will be free from defects in materials and workmanship, under normal use and service, for the period of the first 12 months of regular service post the date-in-service. This warranty extends only to the original first owner. It is not transferable and applies only to OEM installed components and equipment.

3 YEAR PAINT AND FINISH

- Steel shot blast
 - Industrial top coat and oven baked finish is warranted against defects in materials and workmanship.
 - Custom colors are subject to a 1 year warranty only.
 - Does not cover against general wear and tear such as stone chips or fade as of 2016.
- *CONDITIONS MAY APPLY.**

5 YEAR SUPER STRUCTURE

- Warrants the trailer main frame beams or "super-structure" (consisting of the top and bottom flanges, and their connecting web) to be free from defects in materials and workmanship, under normal use and service for a period of 5 years from the date-in-service only to the original first owner.

SUSPENSION

- Ridewell holds a 5 year warranty on all beams and bushings.

6 YEAR BRAKES

- Haldex Platinum Warranty to the 1st owner Life Seal equipped Haldex ABS component brake system slack adjusters/brake chambers (Haldex LifeSeal)/ABS system ECM & control valve. 6 year or one (1) million mile warranty against defects in material or workmanship.

7 YEAR LIGHTING

- Grote Ultra Blue
- 7 year warranty on the male pin harness
- 10 year warranty on tail lights

ADDITIONAL OPTIONS

ACCESSORIES	
ADDITIONAL MUDFLAP SET WITH BRACKETS. (PAIR)	
POLISHED STAINLESS REAR TRIM PACKAGE.	
TIRE CARRIER ONLY.	
TOOLBOX. (48 IN. X 24 IN. X 24 IN.) + BRACKETS	
TOOLBOX. (60 IN. X 24 IN. X 24. IN) + BRACKETS	
DECK	
HEAVY DUTY RUB RAIL 3/8 IN. X 3 IN.	
OPTIONAL TUBING SIDE RAIL.	
HEAVY DUTY TOW HOOKS.	
LIGHTING / ELECTRICAL	
LED FULL SKIRT LIGHT PKG.	
LOAD SECUREMENT	
ROPE HOOKS, J HOOKS, STRAPS WITH CHAIN & HOOK, WINCHES	
PAINT	
RED, YELLOW, CUSTOM.	
SUSPENSIONS / AXLES	
ABS SYSTEM 4S/2M.	
28HBT ALUM. WHEEL PKG	32HBT ALUM. WHEEL PKG
22.5 (4 MACHINED, 4 POLISHED)	22.5 (12 MACHINED)
22.5 (4 STEEL, 4 POLISHED)	22.5 (6 MACHINED, 6 POLISHED)
22.5 (8 MACHINED)	22.5 (6 STEEL, 6 POLISHED)