



HYDRAULIC DETACHABLE

35HDG2X53 AGNR

SHOWN WITH OPTIONAL EQUIPMENT

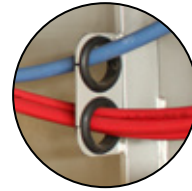
Grote Ultra Blue lighting system with standard LED lights that includes warranty on all harnesses and lights.

Chassis is steel shot blasted, painted with PPG industrial coating and oven-baked for 75 minutes at 145 degrees.

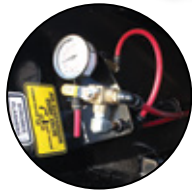
Central grease system.

All electrical components are secured to chassis through rubber grommets. This allows easy access for maintenance and reduces cost over life span of the trailer.

Removable platform deck.



Aluminum slide outs.



Hydraulic neck controls are easily accessible for raising and lowering trailer deck.

Adjustable ride height, load gauge and air Suspension dump valve.

Hub alert heat detection system on the axles.

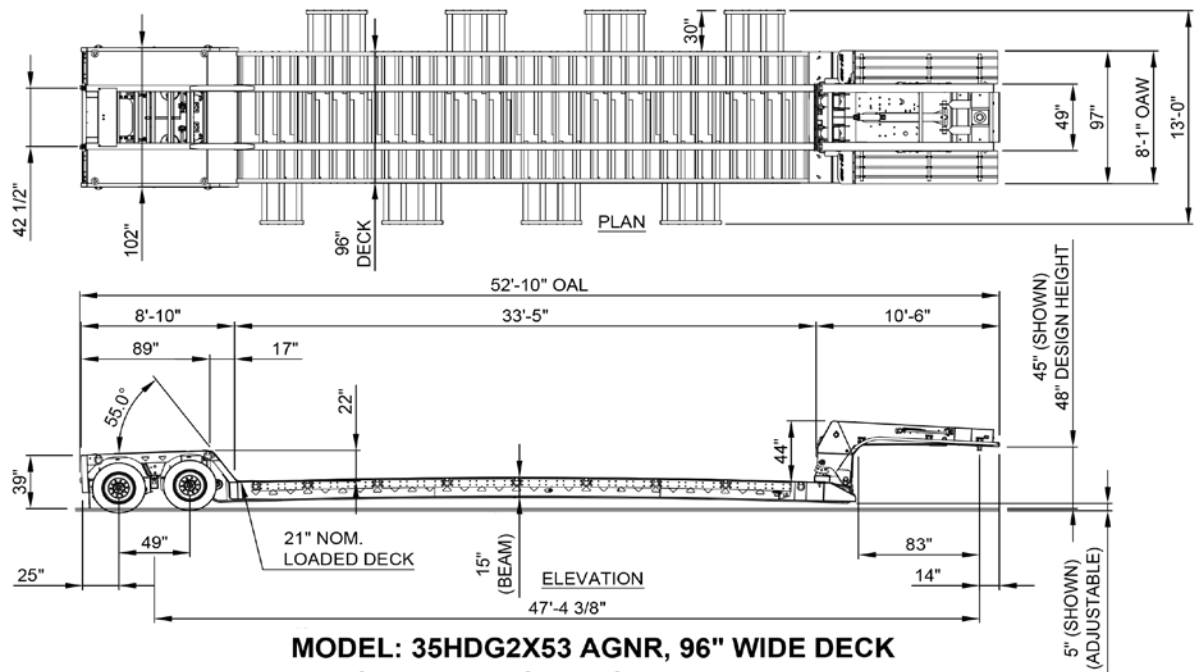


Rev. 0



D I F F E R E N T B Y D E S I G N

29 Hawkins Road, Centreville, NB E7K 1A4 · T 506 276-4567 · F 506 276-4380 · sales@bwstrailers.com



MODEL: 35HDG2X53 AGNR, 96" WIDE DECK

35 TON HYDRAULIC DETACHABLE, 2 AXLE, 53 FT.

NOTE: ALL DIMENSIONS ARE LOADED & NOMINAL.

*weights shown in lbs.	GVWR	Rating in 4'	Rating in 8'	Rating in 10'	Rating in 16'	Weight
35HDG2X53	87,000	37,400	44,000	48,000	70,000	20,000

WARRANTY

1 YEAR BUMPER TO BUMPER

Warrants that the specified BWS equipment will be free from defects in materials and workmanship, under normal use and service, for the period of the first 12 months of regular service post the date-in-service. This warranty extends only to the original first owner. It is not transferable and applies only to OEM installed components and equipment.

3 YEAR PAINT AND FINISH

- Steel shot blast
 - Industrial top coat and oven baked finish is warranted against defects in materials and workmanship.
 - Custom colors are subject to a 1 year warranty only.
 - Does not cover against general wear and tear such as stone chips or fade as of 2016.
- *CONDITIONS MAY APPLY.**

5 YEAR SUPER STRUCTURE

Warrants the trailer main frame beams or "super-structure" (consisting of the top and bottom flanges, and their connecting web) to be free from defects in materials and workmanship, under normal use and service for a period of 5 years from the date-in-service only to the original first owner.

SUSPENSION

Ridewell holds a 5 year warranty on all beams and bushings.

6 YEAR BRAKES

Haldex Platinum Warranty to the 1st owner Life Seal equipped Haldex ABS component brake system slack adjusters/brake chambers (Haldex LifeSeal)/ABS system ECM & control valve. 6 year or one (1) million mile warranty against defects in material or workmanship.

7 YEAR LIGHTING

- Grote Ultra Blue
- 7 year warranty on the male pin harness
- 10 year warranty on tail lights

ADDITIONAL OPTIONS

ACCESSORIES

- CENTRAL GREASE SYSTEM, FULLY INSTALLED ON PASSENGER SIDE.
- IN FLOOR CHAIN BOX AT REAR OF MAIN DECK, DECKPLATE COVER INCLUDED.
- PINTLE HITCH ASSEMBLY IN REAR SKIRT WITH 36 IN MUDFLAP AND 7 PIN RV PLUG. USED TO HAUL WAGON WITH COMBINE HEADER.
- REMOVABLE HOLLAND FW0001 5TH WHEEL AT REAR. USED FOR HAULING EMPTY GRAIN TRAILER.
- D SIGN - REMOVABLE PLYWOOD.

GOOSENECK

- TOBOGGAN FENDERS **OR** REMOVABLE PLATFORM DECK.
- SELF-CONTAINED POWER UNIT, 2 STAGE PUMP W/DIVERTER VALVE AND COVER.
- AIR OPERATED LOCK PIN IN GOOSENECK.

LIGHTING / ELECTRICAL

- AMBER FLASHING STROBE LIGHTS. (MOUNTED IN BUMPER)
- LED LIGHT ENHANCEMENT PACKAGE. (6 ADDITIONAL LIGHTS PER SIDE)
- LED WIDE LOAD LIGHTS 2.5 IN. (SET OF 4), 2 PULL OUT (REAR) 2 SWING OUT (FRONT)

LOAD SECUREMENT

- IN FLOOR FLUSH MOUNTED D RINGS, CHAIN PULL OUTS, EXTRA, SIDE MOUNT D RINGS, SIDE MOUNT D INGS, (45 DEGREE BEND) WINCHES (3 BAR WELD ON), WINCHES STANDARD WELD ON.
- ALL 20,000 LB RATED SLIDE OUTS. (PER FOUR LEG)

PAINT

RED, YELLOW, CUSTOM.

SUSPENSION / AXLES

- AIR WEIGH SCALE.
- ALUMINUM WHEEL PACKAGE 22.5 (4 MACHINED, 4 POLISHED)
- ALUMINUM WHEEL PACKAGE 22.5 (4 STEEL, 4 POLISHED)
- MERITOR TIRE INFLATION SYSTEM BY TSI