



HIGHWAY FLAT

48HF2X, 48HF3X, 48HF4X, 50HF5X, 53HF3X, 53HF4X

SHOWN WITH OPTIONAL EQUIPMENT

Winch track and winches.

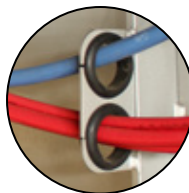


Chassis is steel shot blasted, painted with PPG industrial coating and oven-baked for 75 minutes at 145 degrees.

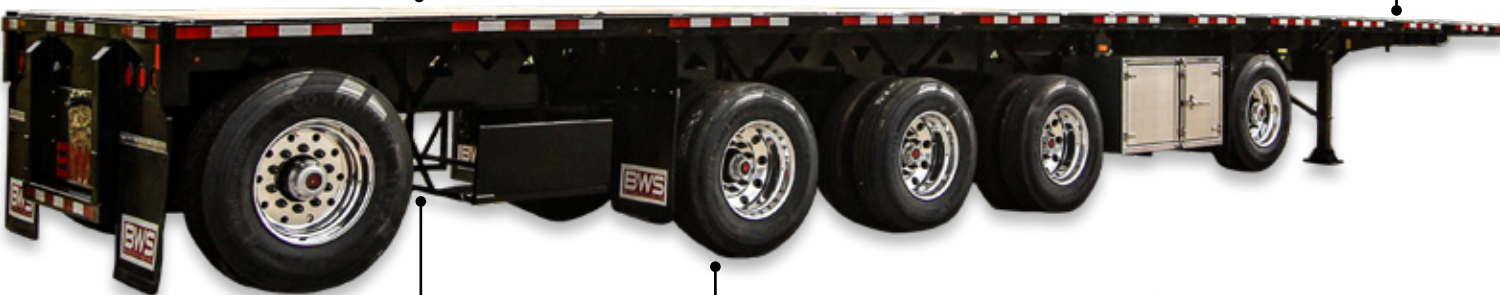
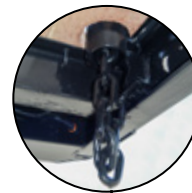
Grote Ultra Blue lighting system with standard LED lights that includes warranty on all harnesses and lights.



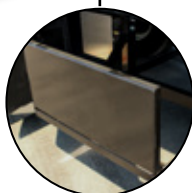
All electrical components are secured to chassis through rubber grommets. This allows easy access for maintenance and reduces cost over life span of the trailer.



Chain pullouts on main deck.



Load gauge and air suspension dump valve.



Dunnage rack.



Hub alert heat detection system on the axles.



Aluminum toolbox.



Super single air lift steer axle.

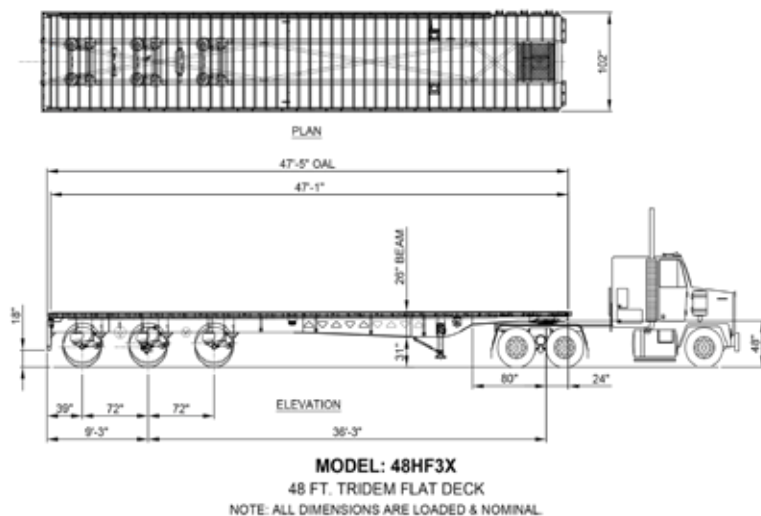


Rev. 0

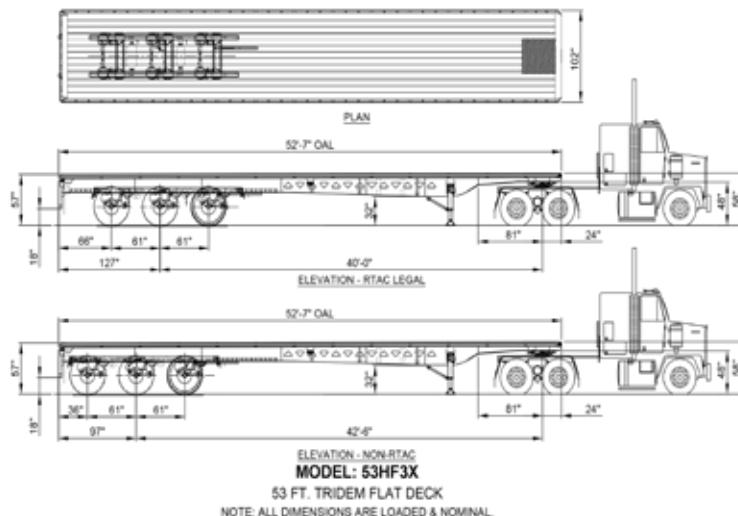


D I F F E R E N T B Y D E S I G N

29 Hawkins Road, Centreville, NB E7K 1A4 · T 506 276-4567 · F 506 276-4380 · sales@bwstrailers.com



*weights shown in lbs.	GVWR	Rating in 4'	Rating in 8'	Rating in 10'	Rating in 15'	Weight
48HF3X	101,000	32,000	40,000	45,000	50,000	13,290



*weights shown in lbs.	GVWR	Rating in 4'	Rating in 8'	Rating in 10'	Rating in 15'	Weight
53HF3X	112,000	32,000	40,000	45,000	50,000	14,920

WARRANTY

1 YEAR BUMPER TO BUMPER

- Warrants that the specified BWS equipment will be free from defects in materials and workmanship, under normal use and service, for the period of the first 12 months of regular service post the date-in-service. This warranty extends only to the original first owner. It is not transferable and applies only to OEM installed components and equipment.

3 YEAR PAINT AND FINISH

- Steel shot blast
- Industrial top coat and oven baked finish is warrantied against defects in materials and workmanship.
- Custom colors are subject to a 1 year warranty only.
- Does not cover against general wear and tear such as stone chips or fade as of 2016.

***CONDITIONS MAY APPLY.**

5 YEAR SUPER STRUCTURE

- Warrants the trailer main frame beams or "super-structure" (consisting of the top and bottom flanges, and their connecting web) to be free from defects in materials and workmanship, under normal use and service for a period of 5 years from the date-in-service only to the original first owner.

SUSPENSION

- Ridewell holds a 5 year warranty on all beams and bushings.

6 YEAR BRAKES

- Haldex Platinum Warranty to the 1st owner Life Seal equipped Haldex ABS component brake system slack adjusters/brake chambers (Haldex LifeSeal)/ABS system ECM & control valve. 6 year or one (1) million mile warranty against defects in material or workmanship.

7 YEAR LIGHTING

- Grote Ultra Blue
- 7 year warranty on the male pin harness
- 10 year warranty on tail lights

ADDITIONAL OPTIONS

ACCESSORIES

EXTRA MUDFLAP SET WITH BRACKETS.

POLISHED STAINLESS PACKAGE.

DUNNAGE RACK 100 IN. (L) X 24 IN. (W) X 20 IN. (H)

TOOLBOX ALUM. (48 IN. X 24 IN. X 24 IN.) + BRACKETS

DECK

ALL KERUING / APITONG FLOOR **OR** ALL SOFTWOOD FLOOR.

HEAVY DUTY RUB RAIL 3/8 IN. X 3 IN.

HEAVY DUTY TOW HOOKS.

INSTALL HEADBOARD POCKETS AND RUB RAIL.

NO RUB RAIL AND POCKETS FOR CURTAIN INSTALLATION.

LIGHTING / ELECTRICAL

LED 4 IN. WIDE LOAD LIGHTS PULLOUT STYLE. (SET OF 4)

LED LIGHT ENHANCEMENT PKG. (6 ADDITIONAL LIGHTS PER SIDE)

LOAD SECUREMENT

IN FLOOR FLUSH MOUNTED D-RINGS, CHAIN PULL OUTS, J HOOK, ROPE HOOKS, STRAPS WITH CHAIN & HOOK, WINCHES.

PAINT

RED, YELLOW, CUSTOM.

SUSPENSIONS / AXLES

22.5 TIRES.

4S/2M ABS.

ALUMINUM WHEEL PACKAGE 22.5 **OR** 24.5 (6 MACHINED, 6 POLISHED)

ALUMINUM WHEEL PACKAGE 22.5 **OR** 24.5 (6 STEEL, 6 POLISHED)

DUAL HOLLAND MARK V 2 SPEED LANDING GEAR.