

BWS P/N:40962301 REV:2



# OPERATOR'S MANUAL

MODEL 45DD3X 8-121A

MAY 2019

[www.bwstrailers.com](http://www.bwstrailers.com)  
toll free 888.896.5777



ISO 9001:2015  
CERTIFIED

# GENERAL MANUAL CONTENTS

<b>INTRODUCTION</b>		<b>3</b>
Products		3
<b>BWS COMPANY HISTORY</b>		<b>4</b>
Quality Policy		5
<b>COMPLIANCE PLATE</b>		<b>6</b>
<b>GREASE FITTINGS</b>		<b>8</b>
<b>RIDE HEIGHT CONTROL</b>		<b>9</b>
<b>HUB ALERT™</b>		<b>10</b>
Hubometer		11
<b>DUMP VALVE</b>		<b>11</b>
Promotional Drawing		12
<b>SCHEMATICS</b>		<b>13</b>
Main Assembly	1/6	13
Main Assembly	2/6	14
Main Assembly	3/6	15
Main Assembly	4/6	16
Main Assembly	5/6	17
Main Assembly	6/6	18
Gooseneck	1/4	19
Gooseneck	2/4	20
Gooseneck	3/4	21
Gooseneck	4/4	22
Rear Bridge	1/5	23
Rear Bridge	2/5	24
Rear Bridge	3/5	25
Rear Bridge	4/5	26
Rear Bridge	5/5	27
Cask Deck Lug Layout	1/2	28
Cask Deck Lug Layout	2/2	29
Wiring Schematic		30
Air Schematic		31
<b>WARRANTY</b>		<b>32</b>
Structural & Component Warranties		32

# INTRODUCTION

The BWS product you have just taken delivery of has been carefully designed and built for easy, low maintenance, reliable operation that meets the requirements of a shrewd transportation industry.

We take this opportunity to thank you for choosing BWS Manufacturing Ltd, and your interest in continued safety and reliable operation of this equipment through its' dealer and service network abroad. BWS trailers require that you and anyone else who will be operating or maintaining the trailer, read this manual carefully and understand the Safety, Operation, Maintenance and Trouble Shooting information contained in the Operator's Manual.

## PRODUCTS

### FORESTRY

Logging trailers, straight and drop frames  
Hydraulic & air detachable goosenecks  
B-Train loggers  
Jeeps  
Tag-a-longs

### GENERAL FREIGHT

Equipment trailers  
Hydraulic & Air Detachable Goosenecks  
Highway Drop Decks  
Highway Flatbeds  
B-Train Flatbeds  
Pony Trailer

### CONSTRUCTION

Low bed equipment trailers  
Detachable & fixed goosenecks  
Hydraulic & air detachable goosenecks  
Tag-a-long trailers, tilting & non-tilting decks  
Dump trailers  
Jeeps  
Boosters  
Live Bottom trailers

### HYDRO/TELEPHONE

Cable Reel trailers

### SPECIAL ORDER TRAILERS

Nuclear Waste  
Generator Trailers  
Wagon Type Trailers  
Military Trailers  
Specialty Trailers for offshore products

### OIL & GAS

Oilfield trailers  
Equipment trailers  
Oilfield jeeps / Oilfield hydraulics  
Hydraulic goosenecks  
Scissorsnecks  
Tag-a-longs

### PAVING & RECOVERY

Aggregate Screeners  
Hydraulic & air detachable goosenecks  
Equipment trailers  
Tag-a-longs  
Dump Trailer  
Live Bottom trailers

### SNOW & ICE

A/S Dump Sanders  
A/S U-Body Dump Sanders

# BWS COMPANY HISTORY

BWS Trailers are engineered, designed and manufactured in Centreville, New Brunswick. It is a family owned and managed business that is dedicated and committed to delivering outstanding value. Our success is built on thinking like the customer and producing trailers that can be relied on year after year without fail.

Since 1967, we have gained and maintained the trust and respect of experienced customers who work in the oil fields, construction, equipment and machinery moving, forestry, road building, paving and private contracting industries.

Originally BWS manufactured custom trailers with a focus on forestry and agriculture. Having built a solid reputation in this rough off-road industry and operating in the tough Canadian environment, BWS continues today to manufacture trailers that are designed to meet the customers' expectations in the environments in which they operate. The units are designed to go to work and stay at work.

BWS has expanded its product line into areas where it can continue to provide high quality solutions that deliver value.

The employees of BWS are a dedicated workforce with a "craftsman" mentality. Many of its senior people have past experience operating trailers and equipment and this has resulted in their philosophy of putting themselves in the shoes of their customers. BWS relies heavily on feedback from both their dealers and their customers. They build what performs, not just what sells and that is what has contributed to their significant growth throughout North America over the last several years.





**CERTIFIED  
CSA W47.1**



## QUALITY POLICY

BWS Manufacturing is totally committed to understanding and meeting the quality needs and expectations of all our customers. Our company has a proud reputation for delivering quality equipment and components.

BWS strives for continuous improvement of our product and meeting the objectives of the company. We are also committed to the continuous improvement of our quality management system to insure its suitability to meet all company, customer, regulatory, legal and ISO requirements.

The entire BWS team will adhere to the spirit and intent of our quality policy, as well as the directives of this quality assurance manual and its supporting quality system documentation. We will continue to aggressively strive to insure that customer satisfaction is achieved at all times, and in all things.

A handwritten signature in black ink, appearing to read "H. St-Cyr".

Hugo St-Cyr  
CEO

A handwritten signature in black ink, appearing to read "Randy McDougall".

Randy McDougall  
COO



# COMPLIANCE PLATE

The compliance plate is located on the road side of the trailer frame. The National Safety Mark (NSM) verifies compliance with all applicable Canadian Motor Vehicle Safety Standards (CMVSS) and/or American Federal Motor Vehicle Safety Standards (FMVSS), and records the following information.

**V.I.N.** Vehicle Identification Number  
**DATE** Date of Manufacture  
**TYPE** (TRA/REM) in Canada only  
**MODEL** BWS Trailer Model  
**G.V.W.R** Gross Vehicle Weight Rating is the sum of the trailer weight and the allowable trailer load.

**G.A.W.R** Gross Axle Weight Rating is the lowest capacity of all the individual components in the axle assembly. It reflects the "weakest link" in the entire suspension system, whether it be springs, axles, wheels, rims or tires.

**RIM** Rim Diameter x Width  
**TIRE** "Outside Diameter"/ "Width" R "Inside Diameter"



**PRESSURE COLD** Cold tire inflation pressure in psi (US) / kPa and psi (Can.)

It is the practice of BWS to use maximum pressure for tire inflation.

**NSM** BWS has been assigned a registration number and has been authorized to use the NSM on their products. The NSM signifies conformance with the CMVSS set by transport Canada.

# TAG COMPLIANCE PLATE

0

 <p>MANUFACTURED BY / FABRIQUÉ PAR: CENTREVILLE NEW/NOUVEAU BRUNSWICK CANADA</p>			TYPE OF VEHICLE / TYPE DE VÉHICULE: TRA / REM						
MODEL / MODÈLE:			0						
GVWR / PNBV:			0 KG		0 LB				
TARE:			0 KG		0 LB				
DOM / DDF:			0 M/M		0 Y/A				
VIN / NIV:			0						
GAWR / PNBE			RIM / JANTE		TIRE / PNEU			COLD INFLATED PRESSURE / PRESS. DE GONFLÉ À FROID	
POSITION	KG	LB	DIMENSION		DIMENSION	S/S	D/J	KPA	PSI / LPC
FR/AV	0	0	0		0			0	0
INT 1:									
INT 2:									
RR/AR									
THIS VEHICLE CONFORMS TO ALL APPLICABLE U.S. FMVSS AND CANADIAN CMVSS IN EFFECT ON THE DATE OF MANUFACTURE SHOWN ABOVE. CE VÉHICULE SE CONFORME A TOUS LES ÉTATS-UNIS APPLICABLES FMVSS ET CMVSS CANADIEN EN EFFET LA DATE DE LA FABRICATION MONTREÉ CI-DESSUS.									



# GREASE FITTINGS

Grease fittings are located on the rear of the trailer in the center of the webs. They provide easy maintenance for lubrication of the components on the trailer.

## GREASE AT 2500 MILE INTERVALS & PRIOR TO EXTENDED STORAGE

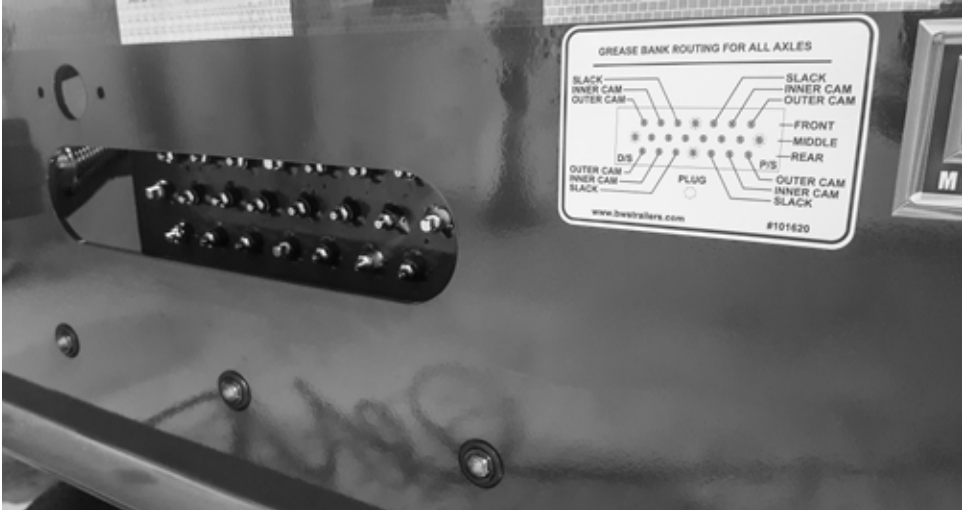


Figure 1: Rear skirt access  
BWS Grease fitting  
Part Number 40957630



Figure 2: Hose connections at rear of fittings



# RIDE HEIGHT CONTROL

The ride height control is located on the center axle cavity of the trailer & is responsible for adjusting the desired ride height of the trailer.

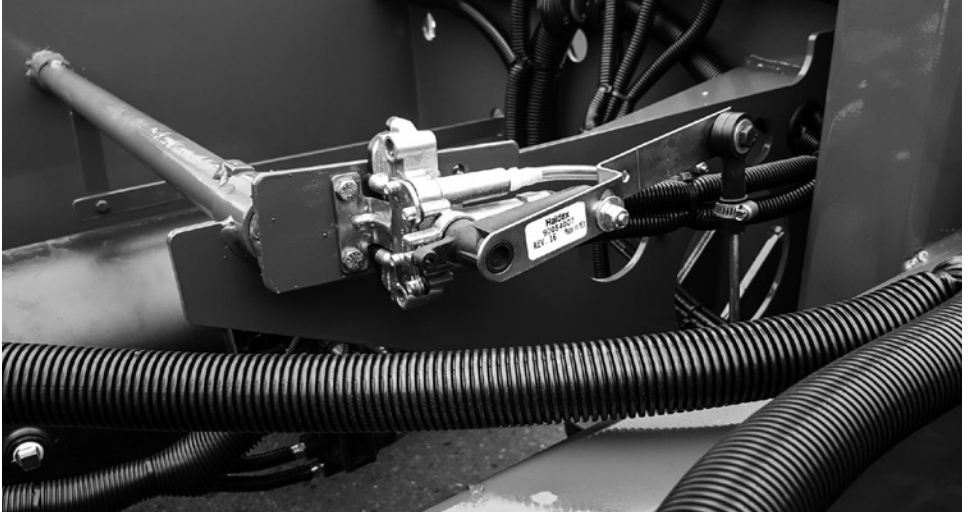


Figure 3: Air ride assembly (close)



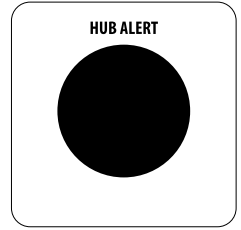
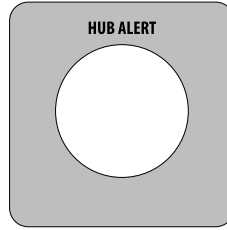
Figure 5: Air ride control bracket

# HUB ALERT™

## HEAT SENSING LABELS IDENTIFY POTENTIAL BRAKE, BEARING OR SEAL ISSUES BEFORE THEY CAUSE COSTLY REPAIRS!

THE NORMAL OPERATING  
TEMPERATURE OF HUB/HUBCAP  
GREASE OR OIL SHOULD NOT EXCEED  
225°F (107°C).

- HUB ALERT™ will alert you to above normal wheel end operating temperature!
- 
- HUB ALERT™ heat sensing label will turn **BLACK** when hub/hubcap surface temperature reaches 250°F (121°C).
- 
- HUB ALERT™ indicates the need for a more detailed inspection of the overheating wheel end.
- 
- New HUB ALERT™ label is applied to the hub/hubcap after resolving overheating issues



## HUBOMETER

The Hubometer is a device mounted on the axle (or center of wheel) of the trailer that measures the distance traveled.



Figure 7: Hubometer

## DUMP VALVE

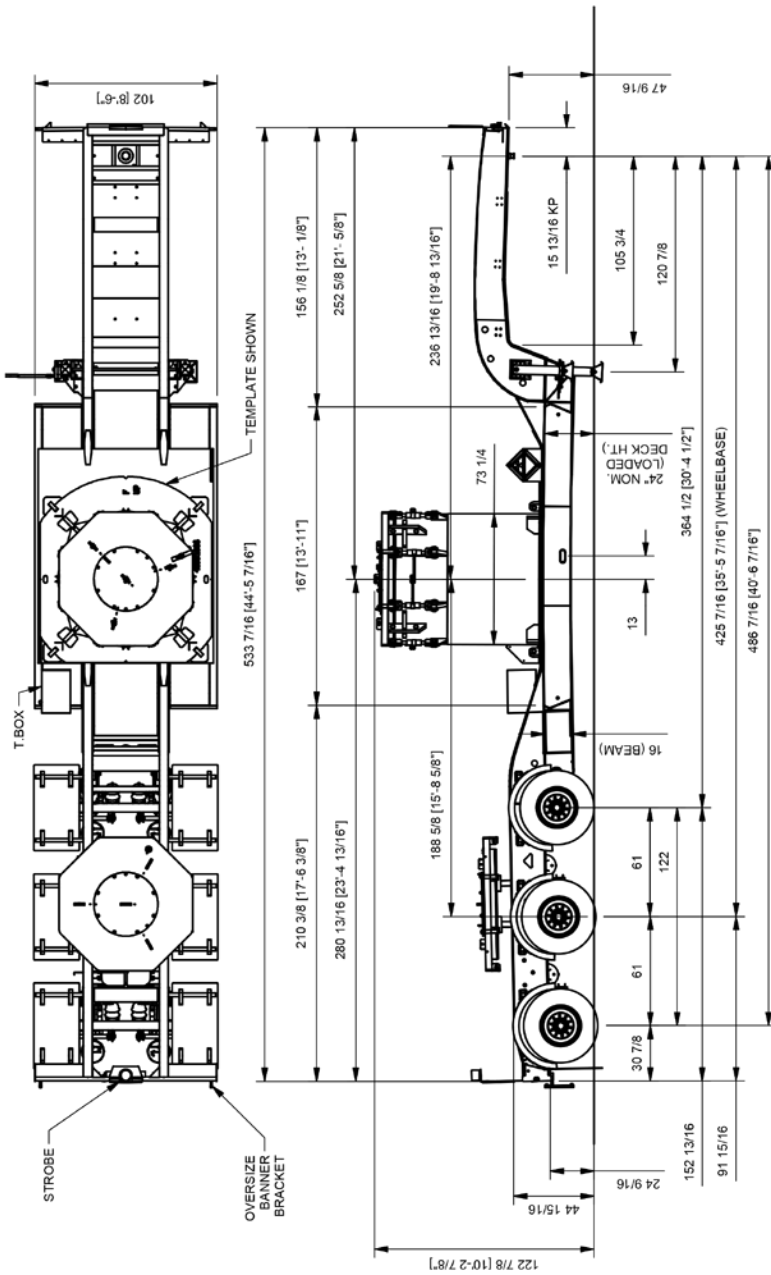
The Air Suspension Dump valve offers a simple method for quick dumping of the air suspension on the trailer.



Figure 7: Suspension air pressure

# PROMOTIONAL DRAWING

45DD3X 40990983 REV. 4



ELEVATION  
SCALE 1 / 75

45DD3X

45 FT. NUCLEAR TRAILER, 3 AXLE, CASK 8-121A

NOTE: ALL DIMENSIONS ARE LOADED AND NOMINAL.







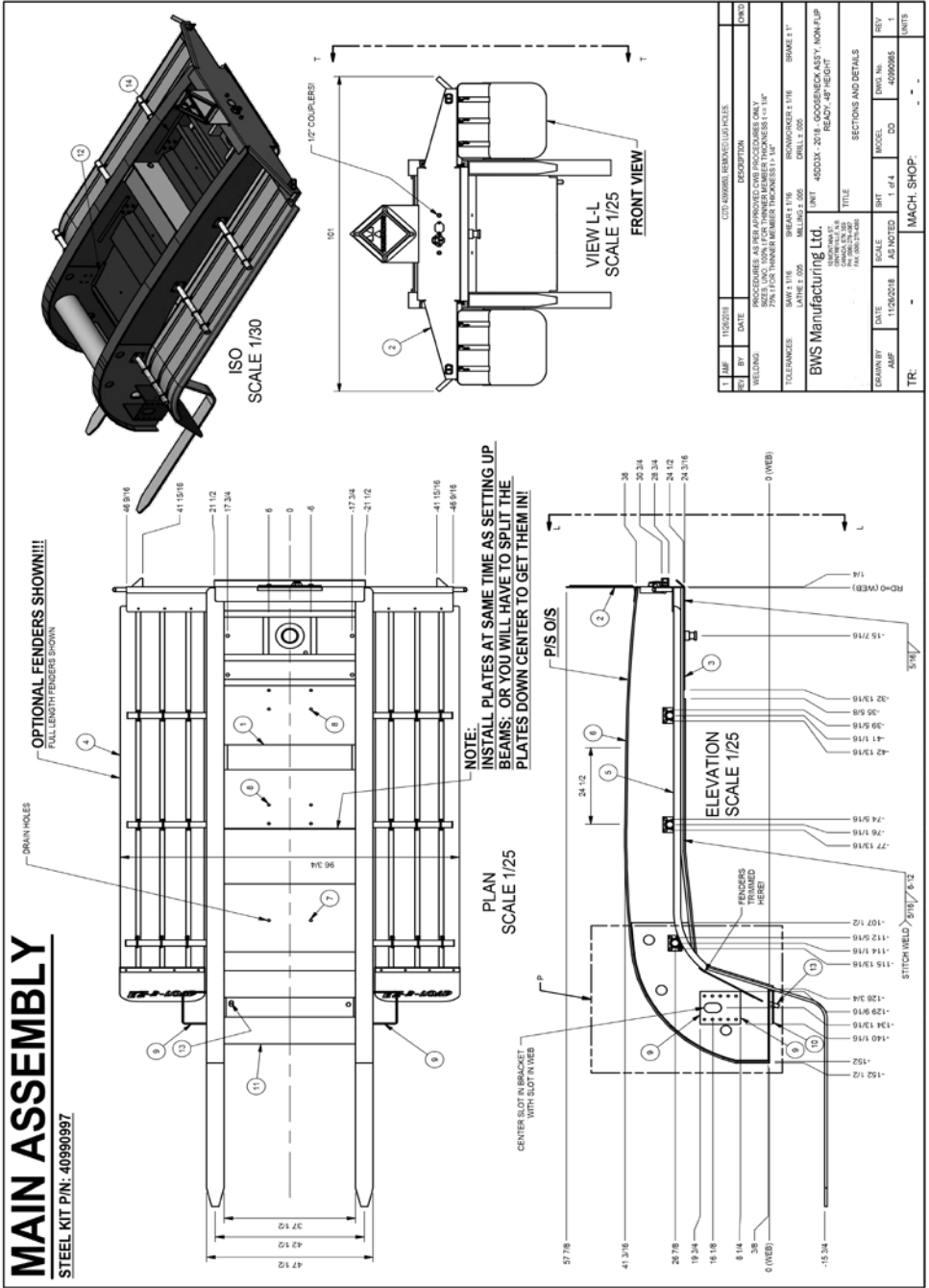






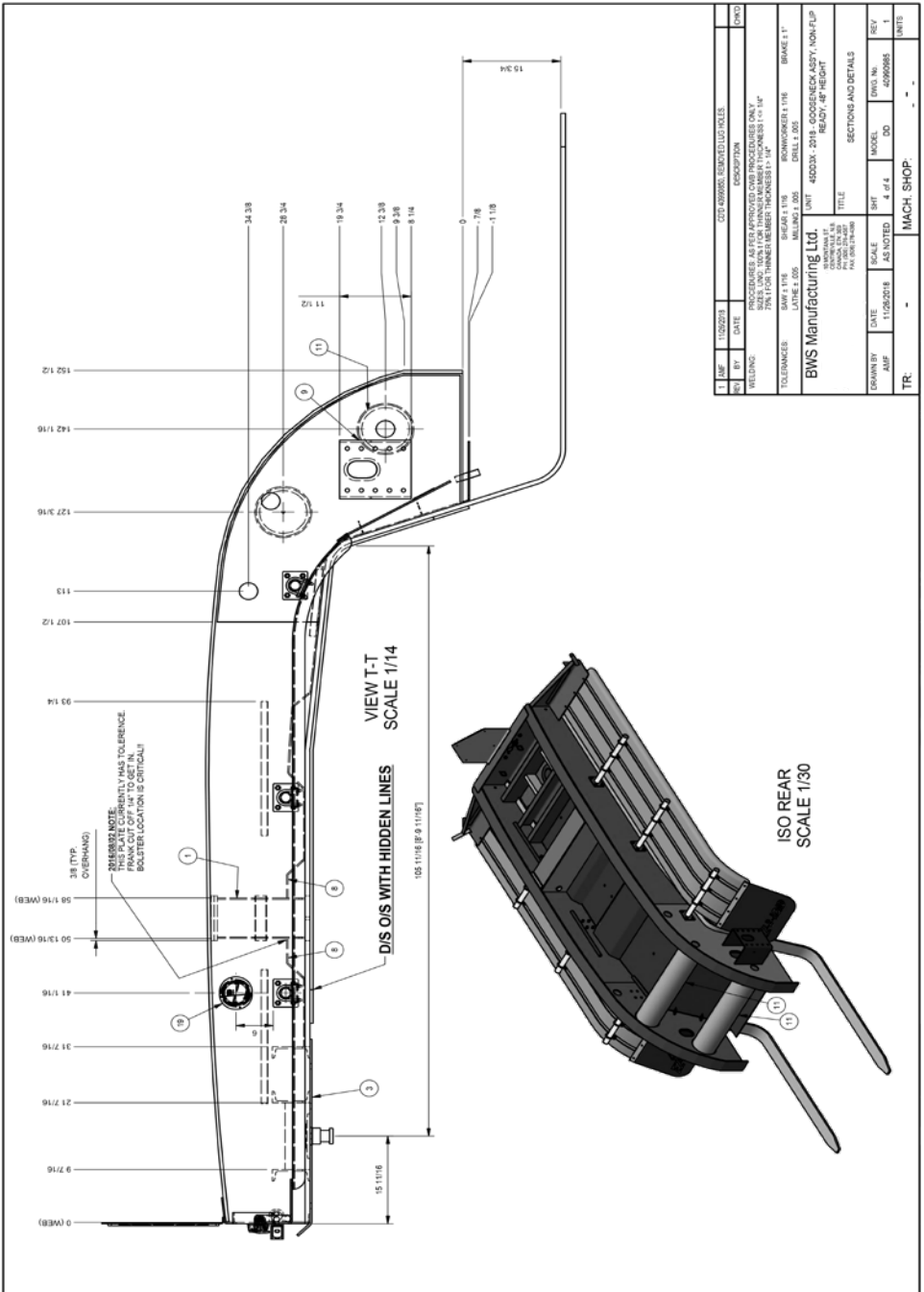












1	DATE	11/20/2018	REV	1
2	DATE	06/03/2019	REV	2
DESCRIPTION: GOOSENECK ASSEMBLY FOR APPROVED CASE PROFILES ONLY SIZE: L&D: 1000 X 1000 X 1000 (MATERIAL THICKNESS 1.5 MM) 2500 X 1000 (MATERIAL THICKNESS 1.5 MM) 2500 X 1000 (MATERIAL THICKNESS 1.5 MM)				
TOLERANCES: DIMENSIONS: F/116 BRASS: F/116 BRASS: F/116 HOLE: F/116 HOLE: F/116 HOLE: F/116 LATHES: G/30 MILLING: G/30				
BWS Manufacturing Ltd. 1000 WINDY HILL RD. COVINGTON, LA 70038 TEL: 504.835.2200 FAX: 504.835.2600				
UNIT: 45DD3X-2018-GOOSENECK ASSEMBLY, NON-FIP TITLE: READY-4P HEIGHT				
SECTIONS AND DETAILS				
SECTION	SCALE	SHEET	DWG. NO.	REV.
4 OF 4	AS NOTED	1	42090985	1
MACH. SHOP: _____				
UNIT: _____				





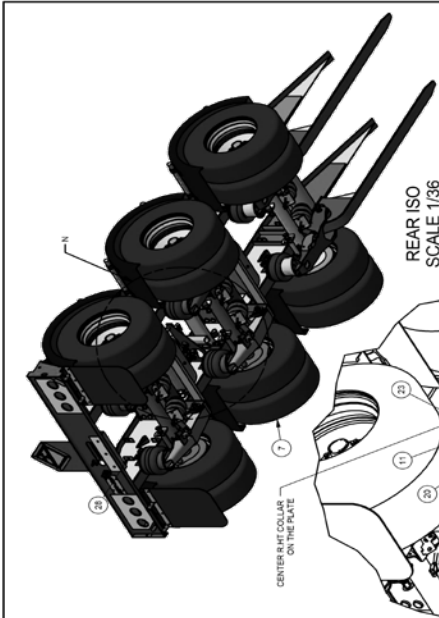








ITEM	QTY	STOCK NO.	PART NO.	DESCRIPTION	LENGTH	WIDTH	AREA (SQ. FT.)	COMMENTS
1	2	4095029		4402X - BRIDGE LID PERCH ASY - SQUARE SHORT				ASY
2	2	4095050		4402X - BRIDGE LID PERCH ASY - SQUARE LONG				ASY
3	1	4095100		OPTIONAL GREASE BANK PLATE ASSEMBLY FOR ALLEGATIONS, 2Z GP'S				ASY
4	2	4095184		INNER BOLT ASY FOR 3/8" BEAM WITH 1/2 X 1.5				ASY
5	1	4095178		4402X - 2016 RUBBER ASY FOR 4" BEAM @ 42 1/2" C.C. 107" OAW, NO LUGS				ASY
6	1	4095171		4402X - 2016 REAR BRIDGE DUAL BEAMS				ASY (WHEEL)
7	6	031-01630		WHEEL ASY - HOG 11RQ2.5 TRES				ASY (WHEEL)
8	1	53146	4095050	FENDER BLACK PLASTIC KIT THRR. W01-0150	20 in	6 in	0.63	FENDER KIT ASY
9	11	6948411		FLAT BAR 1/4 X 6	8 1/4 in	5 3/4 in	0.20	IRON, BRAKE
10	11	7214	4094839	1/4 S0W PLATE	23 1/4 in	14 1/8 in	2.28	LASER
11	11	7214	4094839	1/4 S0W PLATE	19 3/8 in	3 1/8 in	0.22	LASER BEND
12	2	2220134		PLATE 1/2" S0W	4 in	0 1/8 in	0.22	LASER BEND
13	10	7214	4094839	3/8 S0W PLATE	3 1/8 in	3 1/8 in	0.14	LASER BRIDGE
14	1	7218		3/8 S0W PLATE	7 in	7 in	0.49	LASER BRIDGE
15	1	4095154		PIPE 8" SCH. 40	12 1/2 in			M.S. SAW
16	1	4095154		PIPE 8" SCH. 40	22 3/4 in			M.S. SAW
17	4	53122	4094680	FLAT BAR 1/2 X 2	41 3/8 in			M.S. SAW
18	2	5403275	4094680	HSS 6 X 3 X 3/8	41 3/8 in			M.S. SAW
19	2	36454	407454448-80	C4 8 5.4	46 in			PRECUT
20	1	72216	4094629	3/16 S0W PLATE	14 in	4 in	0.29	SHEAR
21	1	72216	4094629	3/16 S0W PLATE	24 3/8 in	18 3/8 in	3.11	SHEAR, BRAKE
22	1	27100	4095184	1/8 GA. PLATE	11 1/8 in	10 5/8 in	0.62	SHEAR, IRONW.
23	1	27100	4095184	1/8 GA. PLATE	11 1/8 in	10 5/8 in	0.62	BRAKE
24	1	4095184		ADJUSTABLE RIDE HEIGHT PIPE ASY, ORIGINAL COMPONENTS, 2.040				STD. ASY
25	6	4095029A		FLAT BAR 1/4 X 2	2 1/8 in			STD. ASY
26	6	53144	4095029	FLAT BAR 1/4 X 2	2 1/8 in			STD. IRONW.
27	1	5314114	4095029	FLAT BAR 1/4 X 1 1/4	2 in			STD. IRONW.
28	3	27100	4095044	1/8 GA. PLATE	2 1/8 in	2 1/8 in	0.14	STD. IRONW.
29	25	27100	4095045	1/8 GA. PLATE	4 1/2 in	2 1/8 in	0.14	STD. LASER
30	1	5411611100	4094661	HSS 1 1/4 X 1 1/4 X .100	4 in			STD. SAW, DRILL
31	2	3818	4094662	1/8" ALUM. DECK PLATE	24 in	4 1/2 in	0.75	STD. SHEAR, IRONW.
32	1	800795	40201	AIR DRYER, BENDIX 400795				STOCK
33	1	407122-AXN-R1		AIR LINE, 7/8" TRACK, 3/4" WALL, 19" STD. NO ABS				STOCK
34	1	407122-AXN-R1		AIR LINE, 7/8" TRACK, 3/4" WALL, 19" STD. ABS				STOCK
35	1	40598		PISTON VALVE, TIE-DOWN/CHUPPET				STOCK
36	1	405214-B		PISTON VALVE, TIE-DOWN/CHUPPET				STOCK
37	4	101361		PLASTIC CAP FOR TUBED PIPE ENDS - CAP PLUG PCE-324				STOCK
38	4	101361		PLASTIC CAP FOR TUBED PIPE ENDS - CAP PLUG PCE-324				STOCK
39	2	4094874		GENERIC BLACK RUBBER GUYLINE FULL 24 X 30	30 in	24 in		STOCK
40	10	402049	4094874	FENDER BRKT, TANKER STYLE (OUT OFF 2.7F)				STOCK
41	3	471052		LARGE AIR YANK				STOCK
42	4	471520		RUBBER ISOLATOR				STOCK
43	4	402051		BRAKE CHAMBER, HALDEX 2000				STOCK
44	1	2403376	407102	SUSPENSION, 30,000 LB. 4.5" RH, 4" BEAM C/C YONE				STOCK
45	2	2403376	407101	SUSPENSION, 30,000 LB. 4.5" RH, 4" BEAM C/C				STOCK
46	1	407101		FLUOROCARBON BRACKET-RADIATIVE				STOCK
47	1	90277						STOCK



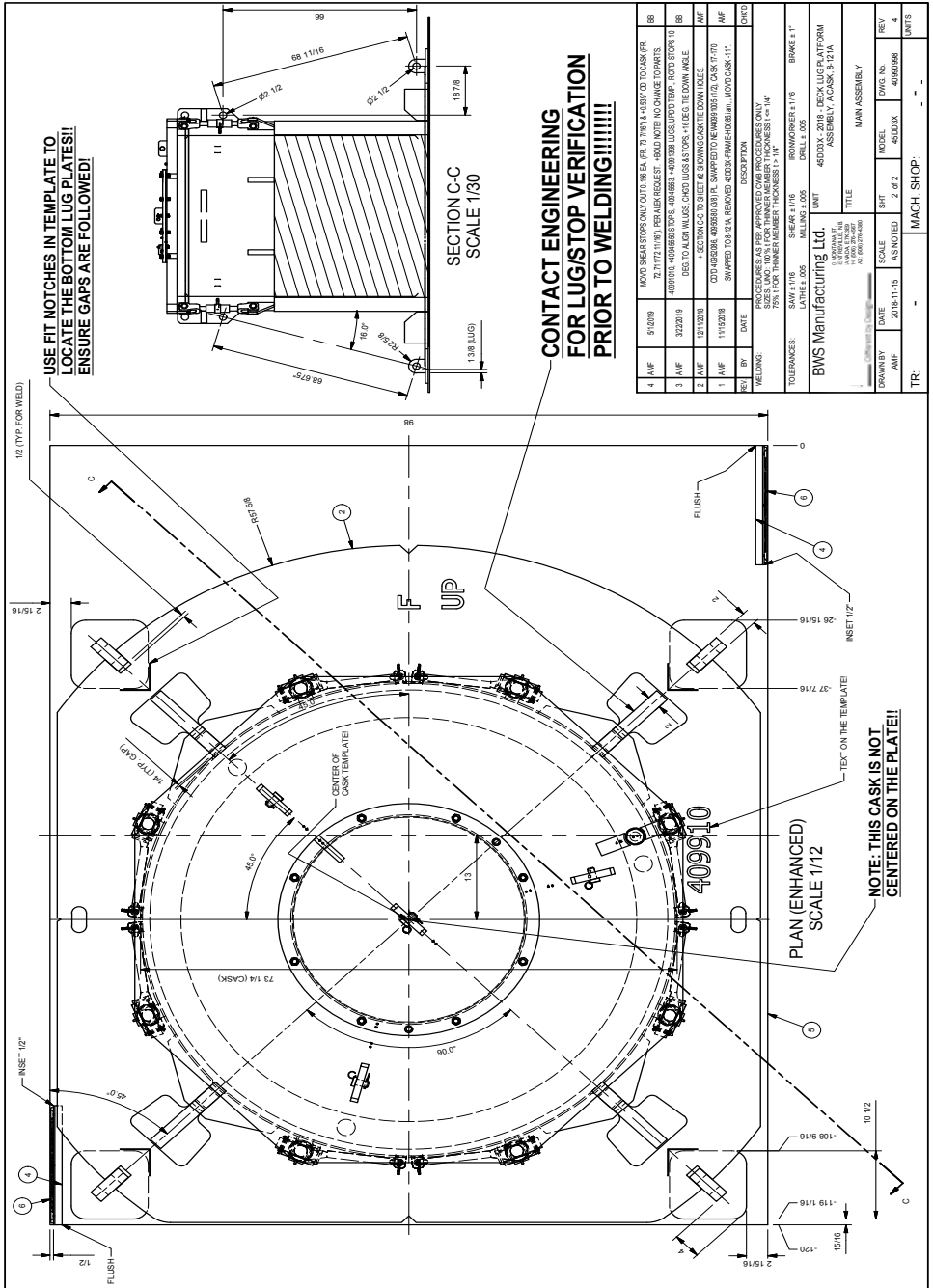
1	AMP	452570	1/2" X 3/8" S0W PLATE, 10" X 11 1/2" X .100 THICKNESS, 15.000	STOCK
2	AMP	452570	1/2" X 3/8" S0W PLATE, 10" X 11 1/2" X .100 THICKNESS, 15.000	STOCK
3	AMP	452570	1/2" X 3/8" S0W PLATE, 10" X 11 1/2" X .100 THICKNESS, 15.000	STOCK
4	AMP	452570	1/2" X 3/8" S0W PLATE, 10" X 11 1/2" X .100 THICKNESS, 15.000	STOCK
5	AMP	452570	1/2" X 3/8" S0W PLATE, 10" X 11 1/2" X .100 THICKNESS, 15.000	STOCK
6	AMP	452570	1/2" X 3/8" S0W PLATE, 10" X 11 1/2" X .100 THICKNESS, 15.000	STOCK
7	AMP	452570	1/2" X 3/8" S0W PLATE, 10" X 11 1/2" X .100 THICKNESS, 15.000	STOCK
8	AMP	452570	1/2" X 3/8" S0W PLATE, 10" X 11 1/2" X .100 THICKNESS, 15.000	STOCK
9	AMP	452570	1/2" X 3/8" S0W PLATE, 10" X 11 1/2" X .100 THICKNESS, 15.000	STOCK
10	AMP	452570	1/2" X 3/8" S0W PLATE, 10" X 11 1/2" X .100 THICKNESS, 15.000	STOCK
11	AMP	452570	1/2" X 3/8" S0W PLATE, 10" X 11 1/2" X .100 THICKNESS, 15.000	STOCK
12	AMP	452570	1/2" X 3/8" S0W PLATE, 10" X 11 1/2" X .100 THICKNESS, 15.000	STOCK
13	AMP	452570	1/2" X 3/8" S0W PLATE, 10" X 11 1/2" X .100 THICKNESS, 15.000	STOCK
14	AMP	452570	1/2" X 3/8" S0W PLATE, 10" X 11 1/2" X .100 THICKNESS, 15.000	STOCK
15	AMP	452570	1/2" X 3/8" S0W PLATE, 10" X 11 1/2" X .100 THICKNESS, 15.000	STOCK
16	AMP	452570	1/2" X 3/8" S0W PLATE, 10" X 11 1/2" X .100 THICKNESS, 15.000	STOCK
17	AMP	452570	1/2" X 3/8" S0W PLATE, 10" X 11 1/2" X .100 THICKNESS, 15.000	STOCK
18	AMP	452570	1/2" X 3/8" S0W PLATE, 10" X 11 1/2" X .100 THICKNESS, 15.000	STOCK
19	AMP	452570	1/2" X 3/8" S0W PLATE, 10" X 11 1/2" X .100 THICKNESS, 15.000	STOCK
20	AMP	452570	1/2" X 3/8" S0W PLATE, 10" X 11 1/2" X .100 THICKNESS, 15.000	STOCK
21	AMP	452570	1/2" X 3/8" S0W PLATE, 10" X 11 1/2" X .100 THICKNESS, 15.000	STOCK
22	AMP	452570	1/2" X 3/8" S0W PLATE, 10" X 11 1/2" X .100 THICKNESS, 15.000	STOCK
23	AMP	452570	1/2" X 3/8" S0W PLATE, 10" X 11 1/2" X .100 THICKNESS, 15.000	STOCK
24	AMP	452570	1/2" X 3/8" S0W PLATE, 10" X 11 1/2" X .100 THICKNESS, 15.000	STOCK
25	AMP	452570	1/2" X 3/8" S0W PLATE, 10" X 11 1/2" X .100 THICKNESS, 15.000	STOCK
26	AMP	452570	1/2" X 3/8" S0W PLATE, 10" X 11 1/2" X .100 THICKNESS, 15.000	STOCK
27	AMP	452570	1/2" X 3/8" S0W PLATE, 10" X 11 1/2" X .100 THICKNESS, 15.000	STOCK
28	AMP	452570	1/2" X 3/8" S0W PLATE, 10" X 11 1/2" X .100 THICKNESS, 15.000	STOCK
29	AMP	452570	1/2" X 3/8" S0W PLATE, 10" X 11 1/2" X .100 THICKNESS, 15.000	STOCK
30	AMP	452570	1/2" X 3/8" S0W PLATE, 10" X 11 1/2" X .100 THICKNESS, 15.000	STOCK
31	AMP	452570	1/2" X 3/8" S0W PLATE, 10" X 11 1/2" X .100 THICKNESS, 15.000	STOCK
32	AMP	452570	1/2" X 3/8" S0W PLATE, 10" X 11 1/2" X .100 THICKNESS, 15.000	STOCK
33	AMP	452570	1/2" X 3/8" S0W PLATE, 10" X 11 1/2" X .100 THICKNESS, 15.000	STOCK
34	AMP	452570	1/2" X 3/8" S0W PLATE, 10" X 11 1/2" X .100 THICKNESS, 15.000	STOCK
35	AMP	452570	1/2" X 3/8" S0W PLATE, 10" X 11 1/2" X .100 THICKNESS, 15.000	STOCK
36	AMP	452570	1/2" X 3/8" S0W PLATE, 10" X 11 1/2" X .100 THICKNESS, 15.000	STOCK
37	AMP	452570	1/2" X 3/8" S0W PLATE, 10" X 11 1/2" X .100 THICKNESS, 15.000	STOCK
38	AMP	452570	1/2" X 3/8" S0W PLATE, 10" X 11 1/2" X .100 THICKNESS, 15.000	STOCK
39	AMP	452570	1/2" X 3/8" S0W PLATE, 10" X 11 1/2" X .100 THICKNESS, 15.000	STOCK
40	AMP	452570	1/2" X 3/8" S0W PLATE, 10" X 11 1/2" X .100 THICKNESS, 15.000	STOCK
41	AMP	452570	1/2" X 3/8" S0W PLATE, 10" X 11 1/2" X .100 THICKNESS, 15.000	STOCK
42	AMP	452570	1/2" X 3/8" S0W PLATE, 10" X 11 1/2" X .100 THICKNESS, 15.000	STOCK
43	AMP	452570	1/2" X 3/8" S0W PLATE, 10" X 11 1/2" X .100 THICKNESS, 15.000	STOCK
44	AMP	452570	1/2" X 3/8" S0W PLATE, 10" X 11 1/2" X .100 THICKNESS, 15.000	STOCK
45	AMP	452570	1/2" X 3/8" S0W PLATE, 10" X 11 1/2" X .100 THICKNESS, 15.000	STOCK
46	AMP	452570	1/2" X 3/8" S0W PLATE, 10" X 11 1/2" X .100 THICKNESS, 15.000	STOCK
47	AMP	452570	1/2" X 3/8" S0W PLATE, 10" X 11 1/2" X .100 THICKNESS, 15.000	STOCK
48	AMP	452570	1/2" X 3/8" S0W PLATE, 10" X 11 1/2" X .100 THICKNESS, 15.000	STOCK
49	AMP	452570	1/2" X 3/8" S0W PLATE, 10" X 11 1/2" X .100 THICKNESS, 15.000	STOCK
50	AMP	452570	1/2" X 3/8" S0W PLATE, 10" X 11 1/2" X .100 THICKNESS, 15.000	STOCK
51	AMP	452570	1/2" X 3/8" S0W PLATE, 10" X 11 1/2" X .100 THICKNESS, 15.000	STOCK
52	AMP	452570	1/2" X 3/8" S0W PLATE, 10" X 11 1/2" X .100 THICKNESS, 15.000	STOCK
53	AMP	452570	1/2" X 3/8" S0W PLATE, 10" X 11 1/2" X .100 THICKNESS, 15.000	STOCK
54	AMP	452570	1/2" X 3/8" S0W PLATE, 10" X 11 1/2" X .100 THICKNESS, 15.000	STOCK
55	AMP	452570	1/2" X 3/8" S0W PLATE, 10" X 11 1/2" X .100 THICKNESS, 15.000	STOCK
56	AMP	452570	1/2" X 3/8" S0W PLATE, 10" X 11 1/2" X .100 THICKNESS, 15.000	STOCK
57	AMP	452570	1/2" X 3/8" S0W PLATE, 10" X 11 1/2" X .100 THICKNESS, 15.000	STOCK
58	AMP	452570	1/2" X 3/8" S0W PLATE, 10" X 11 1/2" X .100 THICKNESS, 15.000	STOCK
59	AMP	452570	1/2" X 3/8" S0W PLATE, 10" X 11 1/2" X .100 THICKNESS, 15.000	STOCK
60	AMP	452570	1/2" X 3/8" S0W PLATE, 10" X 11 1/2" X .100 THICKNESS, 15.000	STOCK
61	AMP	452570	1/2" X 3/8" S0W PLATE, 10" X 11 1/2" X .100 THICKNESS, 15.000	STOCK
62	AMP	452570	1/2" X 3/8" S0W PLATE, 10" X 11 1/2" X .100 THICKNESS, 15.000	STOCK
63	AMP	452570	1/2" X 3/8" S0W PLATE, 10" X 11 1/2" X .100 THICKNESS, 15.000	STOCK
64	AMP	452570	1/2" X 3/8" S0W PLATE, 10" X 11 1/2" X .100 THICKNESS, 15.000	STOCK
65	AMP	452570	1/2" X 3/8" S0W PLATE, 10" X 11 1/2" X .100 THICKNESS, 15.000	STOCK
66	AMP	452570	1/2" X 3/8" S0W PLATE, 10" X 11 1/2" X .100 THICKNESS, 15.000	STOCK
67	AMP	452570	1/2" X 3/8" S0W PLATE, 10" X 11 1/2" X .100 THICKNESS, 15.000	STOCK
68	AMP	452570	1/2" X 3/8" S0W PLATE, 10" X 11 1/2" X .100 THICKNESS, 15.000	STOCK
69	AMP	452570	1/2" X 3/8" S0W PLATE, 10" X 11 1/2" X .100 THICKNESS, 15.000	STOCK
70	AMP	452570	1/2" X 3/8" S0W PLATE, 10" X 11 1/2" X .100 THICKNESS, 15.000	STOCK
71	AMP	452570	1/2" X 3/8" S0W PLATE, 10" X 11 1/2" X .100 THICKNESS, 15.000	STOCK
72	AMP	452570	1/2" X 3/8" S0W PLATE, 10" X 11 1/2" X .100 THICKNESS, 15.000	STOCK
73	AMP	452570	1/2" X 3/8" S0W PLATE, 10" X 11 1/2" X .100 THICKNESS, 15.000	STOCK
74	AMP	452570	1/2" X 3/8" S0W PLATE, 10" X 11 1/2" X .100 THICKNESS, 15.000	STOCK
75	AMP	452570	1/2" X 3/8" S0W PLATE, 10" X 11 1/2" X .100 THICKNESS, 15.000	STOCK
76	AMP	452570	1/2" X 3/8" S0W PLATE, 10" X 11 1/2" X .100 THICKNESS, 15.000	STOCK
77	AMP	452570	1/2" X 3/8" S0W PLATE, 10" X 11 1/2" X .100 THICKNESS, 15.000	STOCK
78	AMP	452570	1/2" X 3/8" S0W PLATE, 10" X 11 1/2" X .100 THICKNESS, 15.000	STOCK
79	AMP	452570	1/2" X 3/8" S0W PLATE, 10" X 11 1/2" X .100 THICKNESS, 15.000	STOCK
80	AMP	452570	1/2" X 3/8" S0W PLATE, 10" X 11 1/2" X .100 THICKNESS, 15.000	STOCK
81	AMP	452570	1/2" X 3/8" S0W PLATE, 10" X 11 1/2" X .100 THICKNESS, 15.000	STOCK
82	AMP	452570	1/2" X 3/8" S0W PLATE, 10" X 11 1/2" X .100 THICKNESS, 15.000	STOCK
83	AMP	452570	1/2" X 3/8" S0W PLATE, 10" X 11 1/2" X .100 THICKNESS, 15.000	STOCK
84	AMP	452570	1/2" X 3/8" S0W PLATE, 10" X 11 1/2" X .100 THICKNESS, 15.000	STOCK
85	AMP	452570	1/2" X 3/8" S0W PLATE, 10" X 11 1/2" X .100 THICKNESS, 15.000	STOCK
86	AMP	452570	1/2" X 3/8" S0W PLATE, 10" X 11 1/2" X .100 THICKNESS, 15.000	STOCK
87	AMP	452570	1/2" X 3/8" S0W PLATE, 10" X 11 1/2" X .100 THICKNESS, 15.000	STOCK



# CASK DECK LUG LAYOUT

45DD3X 4099098 REV. 4

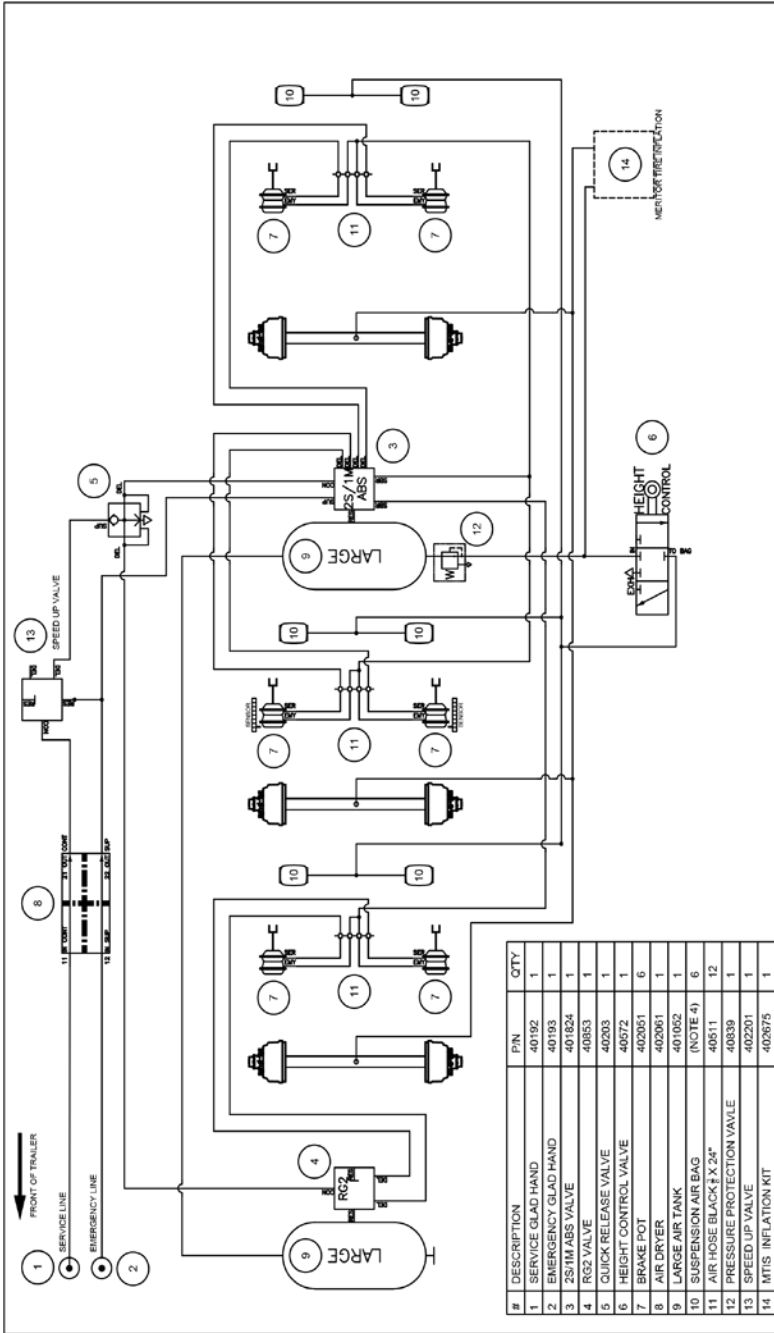
2/2





# AIR SCHEMATIC

45DD3X PS3A212N-MTIS-HAL REV. 0



#	DESCRIPTION	PIN	QTY
1	SERVICE GLAD HAND	40192	1
2	EMERGENCY GLAD HAND	40193	1
3	2S/1M ABS VALVE	401824	1
4	RG2 VALVE	40353	1
5	QUICK RELEASE VALVE	40203	1
6	HEIGHT CONTROL VALVE	40572	1
7	BRAKE POT	402061	6
8	AIR DRYER	402061	6
9	LARGE AIR TANK	401052	1
11	SUSPENSION AIR BAG (NOTE 4)	40511	12
12	PRESSURE PROTECTION VALVE	40839	1
13	SPEED UP VALVE	402201	1
14	MTIS INFLATION KIT	402875	1

NOTES:  
 1) GENERAL LAYOUT WHICH SHOWS STANDARD AND COMMONLY OPTIONED COMPONENTS.  
 2) DIMENSIONS ARE APPROXIMATE AND MAY VARY BY TRAILER SIZE.  
 3) SOME PARTS SUCH AS VALVES VARY BY TRAILER. CHECK PART NUMBER AND PART NUMBER FOR TRAILER TO BE SHOWN.  
 4) SUSPENSION AIR BAGS ARE PART OF THE SUSPENSION ASSEMBLY FOR EACH AXLE. NO BWS PART NUMBER EXISTS FOR THE AIR BAG.

REV.	BY	DATE	DESCRIPTION	INITIAL ISSUE	COPY REF#	AMF
0	LAO	2019/04/03	3 AXLE AIR RIDE W/ HALDEX -MTIS 2S/1M, 2 AIR TANKS, NO DUMP VALVE, AIR DRYER AIR SCHEMATIC			CHK'D

<p><b>BWS Manufacturing Ltd.</b>                  CANADA                  1000 WILSON BLVD.                  CANADA, ETK, S9P                  PAC (506) 779-4380</p>	DATE	2019/04/03	SCALE	1/2" = 1'-0"	DWG. NO.	PS3A212N-MTIS-HAL
	DRAWN BY	L.ORSER	1 OF 1	MODEL	42DD3X	REV

# WARRANTY

BWS Manufacturing Ltd. - Warranty Procedures

## FOR ASSISTANCE, PLEASE CALL SERVICE

Monday - Friday

8:00am-5:00pm AST

Toll Free: 1-888-896-5777

Local: 1-506-276-4567

Email: [warranty@bwstrailers.com](mailto:warranty@bwstrailers.com)

## BWS CONTACT INFORMATION

29 Hawkins Road, Centreville, NB - E7K 1A4

## STRUCTURAL & COMPONENT WARRANTIES

Is free from defects in material and workmanship. No warranty what-so-ever on tires or ABS Sensor Alignment.

1 year 'bumper-to-bumper' - 100% Parts and Labour (from the In Service Date)

For more information, contact the nearest BWS Manufacturing Ltd. authorized dealer or visit [www.bwstrailers.com](http://www.bwstrailers.com)





# OEM Installed Warranty Claim Form

One claim/work order per claim form

Work Order#  Haldex RGA#

### Fleet Information:

Fleet:  Phone:  Date:

Address:  City:  State:  Zip:

Fleet Account Number:  Contact:

### Vehicle Information:

Make/Model:  VIN:  Mileage:

In Service Date:  Date Repaired:  Date of Failure:

### Optional Information:

Tire Size:  Suspension Type:  Speed:  Road Surface:

Maneuver:  Weather:  Other:

### Detailed Description of Problem ( on ABS/TRS claims, RECORD Active and Stored Fault Codes):

### Measure and record push rod travel at 90 PSI for each ABA (automatic brake adjuster) before removal:

### Repairs Made:

### Parts Removed:

Part # Removed	Date Code	Part Description	ABS/ECU Configuration	Qty
<input type="text"/>	<input type="text"/>	<input type="text"/>	<input type="text"/>	<input type="text"/>
<input type="text"/>	<input type="text"/>	<input type="text"/>	<input type="text"/>	<input type="text"/>
<input type="text"/>	<input type="text"/>	<input type="text"/>	<input type="text"/>	<input type="text"/>
<input type="text"/>	<input type="text"/>	<input type="text"/>	<input type="text"/>	<input type="text"/>

Ship warranty parts pre-paid to Haldex. Container must be clearly marked with the RGA number on the outside of the container

**All incomplete claims will be returned**

**All claims must be submitted within 30 days of repair date**  
Call 1-877-442-5339 or email [haldexwarrantyusa@haldex.com](mailto:haldexwarrantyusa@haldex.com)

Ship to: Haldex

Warranty Department  
10930 N. Pomona Ave.  
Kansas City, MO 64153

L9033-1W US 8/10 WEB ONLY





# HARD WORKING TRAILERS

FOR HARD WORKING PEOPLE



[www.bwstrailers.com](http://www.bwstrailers.com)  
toll free 888.896.5777



ISO 9001:2015  
CERTIFIED