



HYDRAULIC DETACHABLE 55HDG3X E

SHOWN WITH OPTIONAL EQUIPMENT

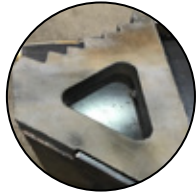
Air & hydraulic hookups angled for optimum clearance in all deck positions.



Standard aluminum cylinder cover.



Standard 6 position ratchet style neck adjustment. Designed for 10 in. below and 24 in. above ground.



Standard removable rear bridge ramp.

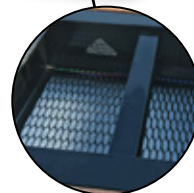


Standard full length boomwell.



Recessed lower neck for greater tire clearance on uneven terrain.

Aluminum gravel guard.



2 Standard chain wells.



89 in. Optional bucket trough with D-Rings included.



Optional pole strobe and other strobe packages available.

Pre-engineered for 315/80 tires.

Standard apitong deck.

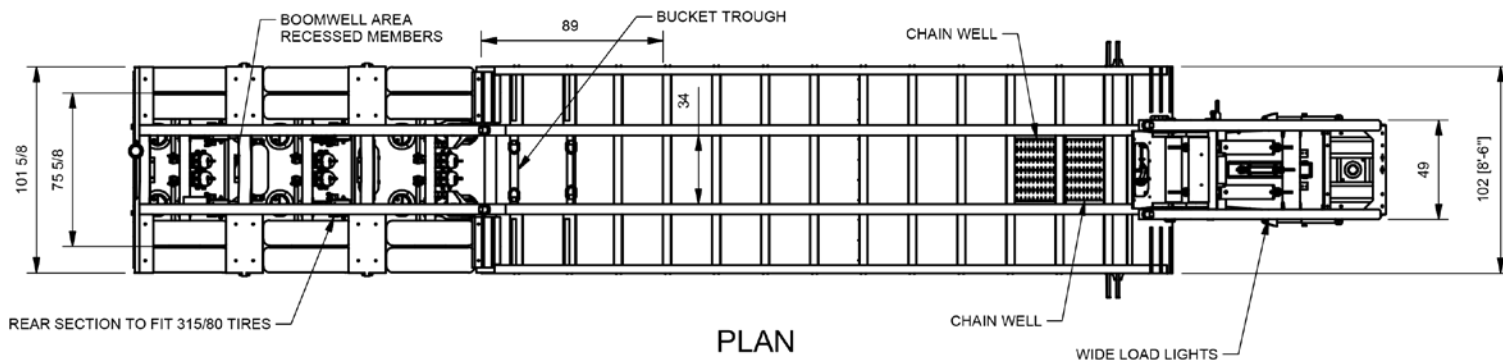
Standard D-Rings (13 pair) and removable swing-out outriggers (15 pair) with double outriggers at the front.

Rev. 1

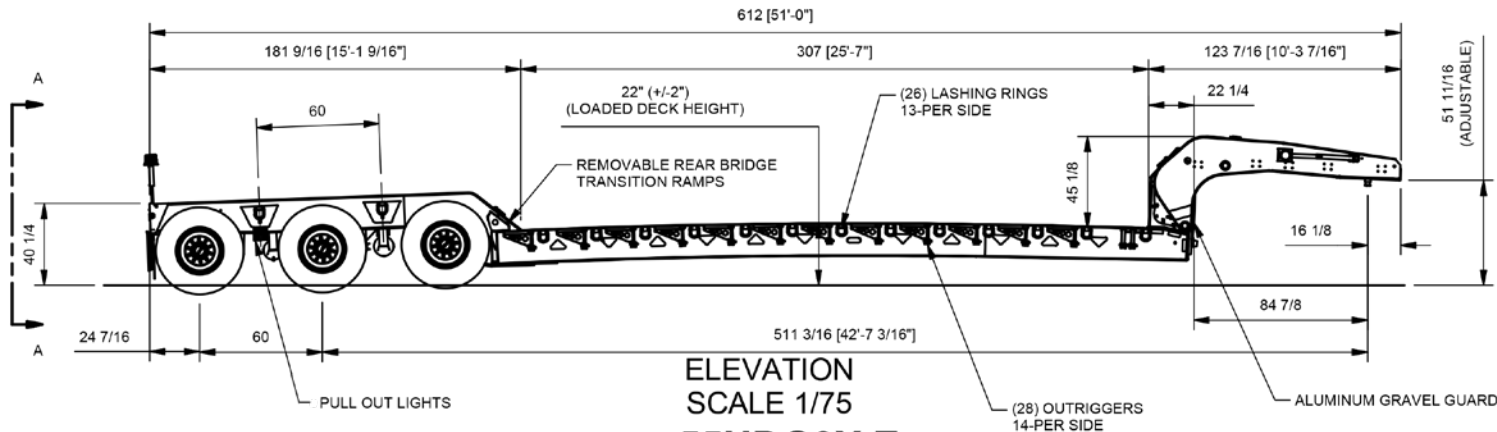


D I F F E R E N T B Y D E S I G N

29 Hawkins Road, Centreville, NB E7K 1A4 · T 506 276-4567 · F 506 276-4380 · sales@bwstrailers.com



PLAN
SCALE 1/75



ELEVATION
SCALE 1/75

55HDG3X E

55 TON TRIDEM SQUARE BACK - 102" WIDE

NOTE: ALL DIMENSIONS ARE LOADED AND NOMINAL.

*weight shown in lbs.	GVWR	Rating in 4'	Rating in 8'	Rating in 10'	Rating in 16'	Rating in 25' (Evenly distributed)	Weight
55HDG3X E	130,000	67,500	70,000	75,000	100,000	55 Ton	18,750

ACCESSORIES



Aluminum rims



Stainless trim package



D-Sign

GOOSENECK



Aluminum front fenders



Tower box cover with or without lights



Brackets in tower for pony motor or chain bar

REAR SECTION

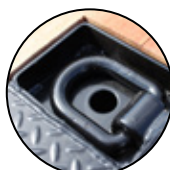


Load bearing full length fenders



Load bearing wheel covers

LOAD SECUREMENT



In floor D-Rings



In floor chain pull outs

LIGHTING

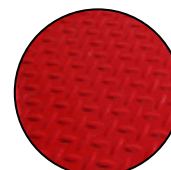


Wide load lights (set of 4)

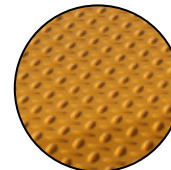


Bumper strobes

PAINT



Red



Yellow

WARRANTY

- 1 Year Bumper-to-Bumper
- 5 Year Super Structure BWS Warranty
- 3 Year Paint "Pro-Rated" PPG Warranty
- 5 Year Ridewell Manufacturer Warranty
- 6 Year Haldex Manufacturer Warranty
- 7 Year Grote Manufacturer Warranty

*See your nearest dealer for complete details