

AXLE ADJUSTMENT PROCEDURE:

- AXLE ALIGNMENT SHALL BE IN ACCORDANCE WITH SAE OR TMC RECOMMENDED STANDARDS.
- LOOSEN 1.25 INCH NUT AT ECCENTRIC BOLT & REMOVE ANTI-TURN WASHER.
- TO MOVE AXLE: TURN ECCENTRIC BOLT HEAD IN DIRECTION AXLE IS TO BE MOVED. MAXIMUM MOVEMENT FROM 12 O'CLOCK POSITION IS TO 9 OR 3 O'CLOCK POSITION, FORWARD OR REARWARD.
- WITH ECCENTRIC BOLT AT ITS FINAL SETTING, INSTALL ANTI-TURN WASHER OVER ECCENTRIC BOLT HEAD AND WELD TO HANGER. TIGHTEN 1.25 INCH NUT TO SPECIFIED TORQUE.

ITEM	SIZE	TORQUE	
		(FT-LB)	(N-M)
PIVOT (Ø1.25 FASTENERS)	1 1/4-7	1000	1356
SHOCK (Ø0.75 FASTENERS)	3/4-10	200	271
AIR SPRING (Ø0.75 FASTENERS)	3/4-16	50	68
AIR SPRING (Ø0.50 FASTENERS)	1/2-13	25	34

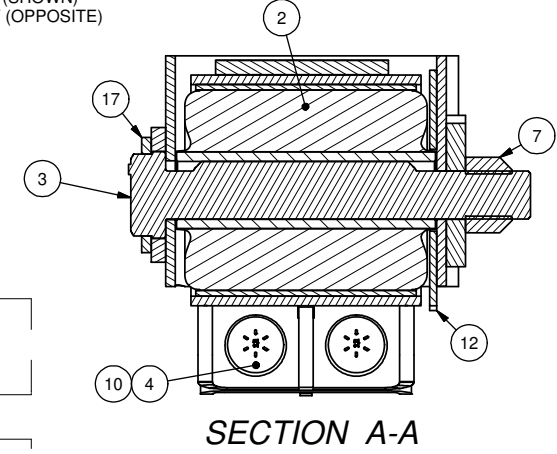
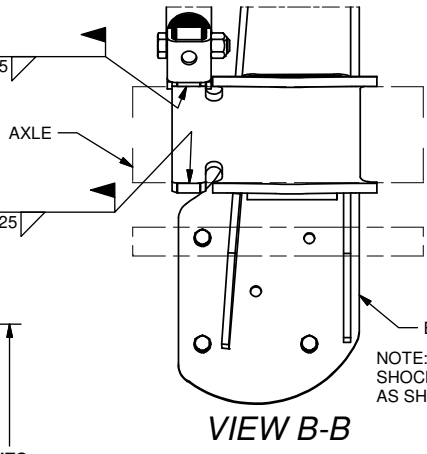
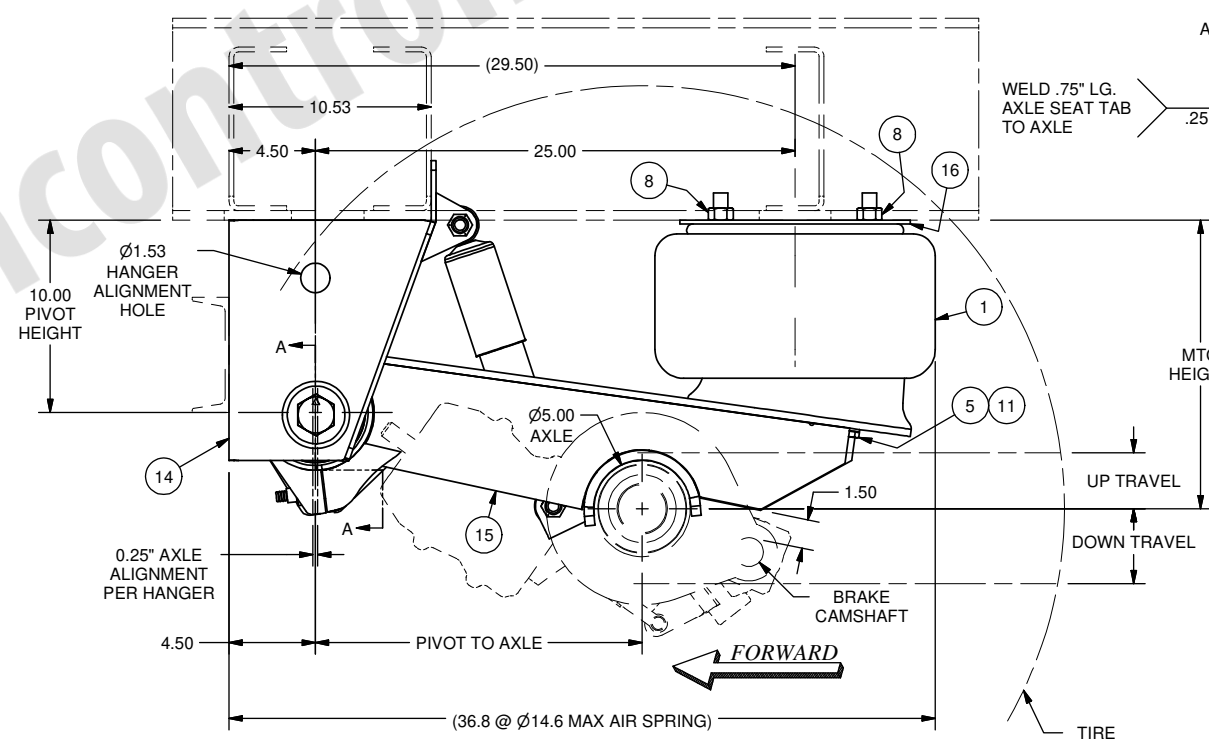
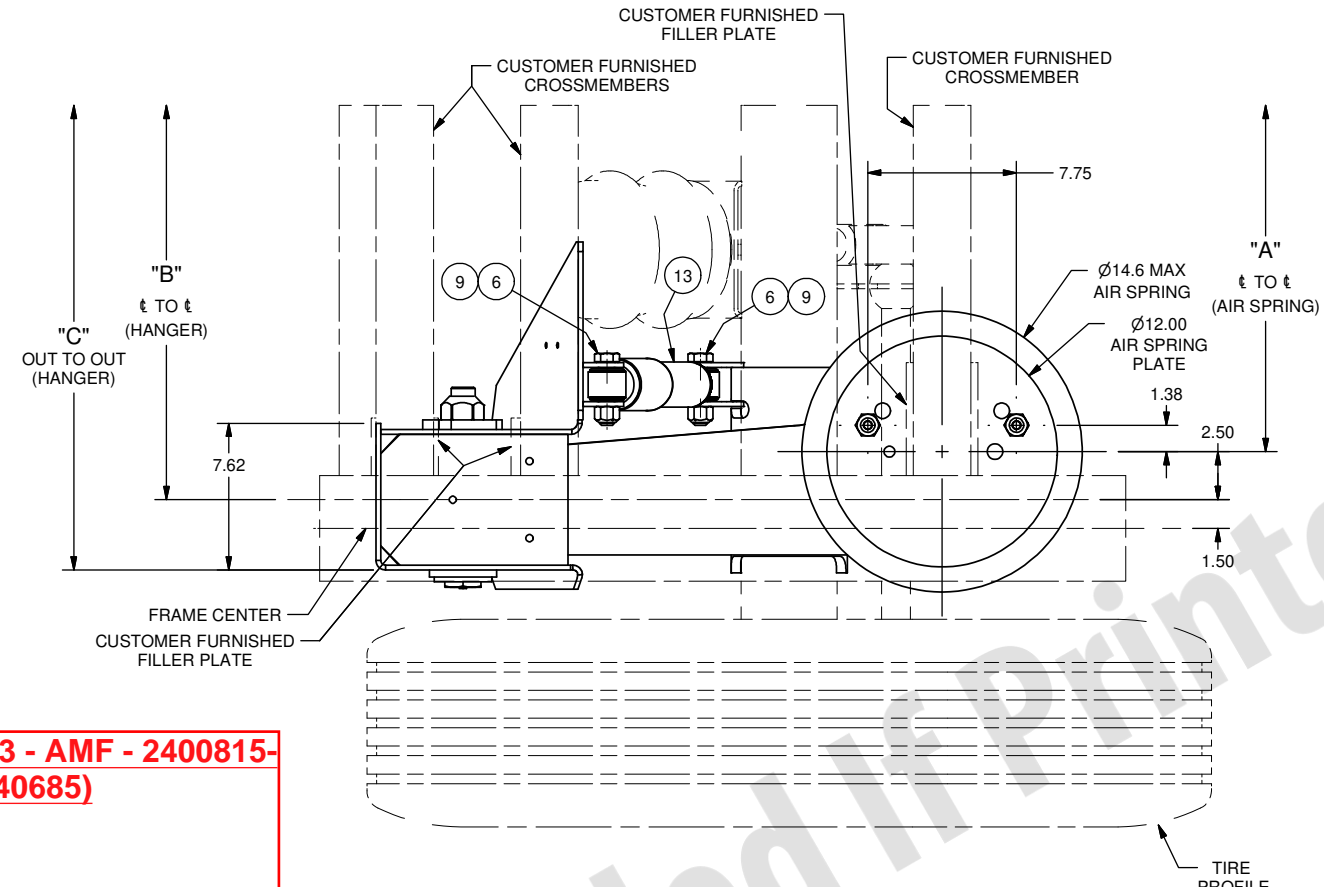
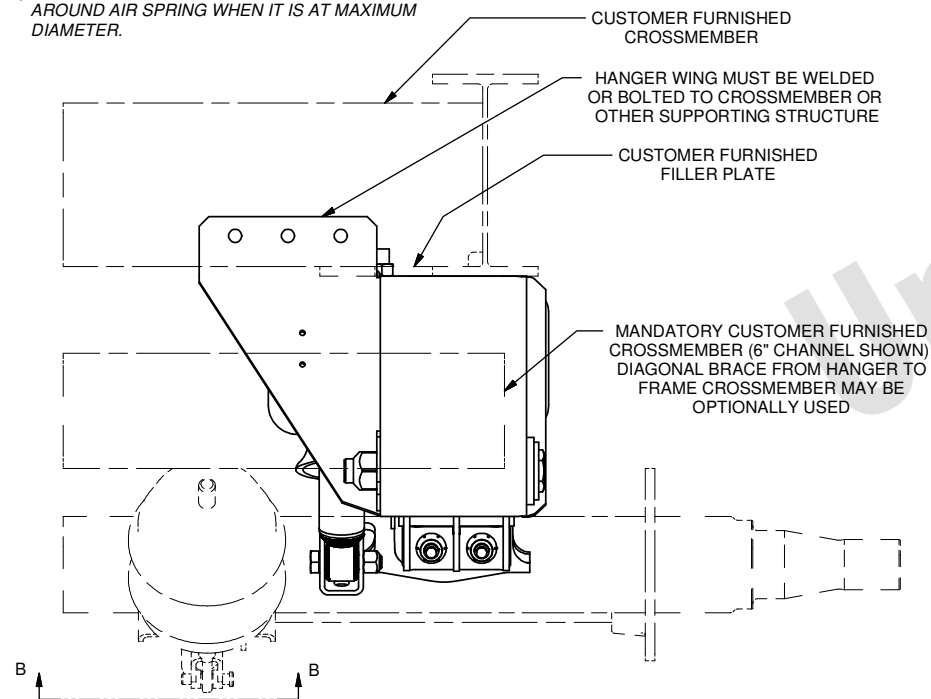
NOTES:

- MAIN PIVOT FASTENERS WILL BE SHIPPED WITH MINIMAL TORQUE APPLIED. IT IS THE INSTALLER'S RESPONSIBILITY TO TIGHTEN FASTENERS TO SPECIFIED TORQUE AFTER AXLE IS ALIGNED.
- TORQUE VALUES REFLECT LUBRICATED THREAD CONDITION (NUTS ARE PRE-LUBED).
- SUSPENSION FASTENERS TO BE RETORQUED INITIALLY AT 6,000 MILES (9,656 KM) AND 50,000 MILES (80,467 KM) INCREMENTS THEREAFTER.
- IN THE EVENT OF BUSHING REPLACEMENT, HUCK FASTENERS MAY BE REPLACED WITH 3/4-10 GRADE 8 HARDWARE TORQUED AT 280-330 FT.LB. FOR BUSHING REPLACEMENT ORDER KIT #6040028.
- FOR AXLE TO SUSPENSION WELDING SEE RIDEWELL WELD PROCESS #1.
- SUGGESTED CROSSMEMBER LOCATION AND SIZE ARE GIVEN. SIZE AND SHAPE MAY VARY WITH THE TRAILER DESIGN AND ARE THE RESPONSIBILITY OF THE TRAILER OEM.
- STATED DOWN TRAVEL REFLECTS SUSPENSION WITH SHOCK ABSORBERS AT MAXIMUM EXTENSION AND WITH UNPRESSURIZED AIR SPRINGS. STATED UP TRAVEL REFLECTS SUSPENSION WITH AIR SPRINGS AT BUMPER CONTACT.
- STATED CAPACITY RATING FOR SUSPENSION ONLY. RATING OF AXLE, BRAKES, AND WHEEL END EQUIPMENT PER MANUFACTURER.
- CONTACT RIDEWELL FOR AIR CONTROL KIT OPTIONS.
- INSTALLER MUST SET THE SUSPENSION TO THE SPECIFIED MOUNTING HEIGHT BEFORE TORQUING THE PIVOT BOLT TO PREVENT PRE-LOADING THE RUBBER IN THE BUSHING.
- FAILURE TO BRACE HANGERS FOR LATERAL LOADS VOIDS WARRANTY.

CLEARANCE SPECIFICATIONS:

- 1.5 INCH MINIMUM CLEARANCE REQUIRED BETWEEN TOP OF TIRE AND BOTTOM OF TRAILER STRUCTURE WHEN AXLE IS AT BUMPER CONTACT.
- 2.0 INCHES MINIMUM CLEARANCE REQUIRED BETWEEN INSIDE OF TIRE AND TRAILER STRUCTURE FOR LATERAL MOVEMENT.
- 0.75 INCH MINIMUM CLEARANCE MUST BE MAINTAINED AROUND AIR SPRING WHEN IT IS AT MAXIMUM DIAMETER.

2023-05-03 - AMF - 2400815-T (BWS #40685)



PARTS REQUIRED FOR 6000017 (CARTON OF PARTS)					
PARTS REQUIRED FOR 3010354 (RH HGR/LBA)					
PARTS REQUIRED FOR 3010353 (LH HGR/LBA)					
ITEM	PART NO.	DESCRIPTION	QTY	QTY	QTY
1	1000008050G	AIR SPRING 1R14-039			2
2	1117680B001	BUSH ASSY 70 DURO MONOPIVOT	1	1	
3	1137694B000	ECCENTRIC BOLT (FORGED) 9.5"	1	1	
4	1130090	HUCK BLT 3/4" .75X1.12 GL GR8	2	2	
** 5	1145383B105	HHCS 1/2" 13NC 1-1/4" L GRADE 5, ZINC PLATE			6
* 6	1147698B105	HHCS 3/4" 10NC 3-1/4" L GRADE 5, ZINC PLATE			4
7	1150033	L'NUT 1-1/4"-7UNC -2B HVY	1	1	
** 8	1150558B102	NUT 3/4" 16NF GRD 2			4
* 9	1150709B105	L'NUT 3/4" 10NC OVAL 3/4" HI WAX			4
10	1150059	HUCK COLLAR 3/4" BOBTAIL	2	2	
** 11	1160556B100	L'WASHER 1/2" S/T MED ZINC PLATE			6
12	1167680B000	WEAR WASHER, UHMW-PE, BLACK	1	1	
13	1270563B003	SHOCK ASSY 6" MONROE			2
14	3260019	HANGER ASSY - LH	1		
	3260020	HANGER ASSY - RH		1	
15	4280008	BEAM ASSY - LH	1		
	4280009	BEAM ASSY - RH		1	
16	7000407	AIR SPRING MOUNTING PLATE			2
17	9003092B000	ANTI-TURN WASHER			2

* ITEMS ARE INCLUDED IN PARTS BAG 1800001
 ** ITEMS ARE INCLUDED IN PARTS BAG 1800004

REFERENCE NOTE FOR ORDERING BEAM/BUSH ASSY:
 5970077 - LH BEAM/BUSH ASSEMBLY (SHOWN)
 5970078 - RH BEAM/BUSH ASSEMBLY (OPPOSITE)

TRACK WIDTH (IN)	71.50	77.50
DIMENSION "A" (IN)	30.00	36.00
DIMENSION "B" (IN)	35.00	41.00
DIMENSION "C" (IN)	42.31	48.31

MODEL NUMBER	MTG HEIGHT	UP TRAVEL	DOWN TRAVEL	PIVOT TO AXLE
RAR-240-1-15-30-OSW	15.0"	2.9"	3.9"	17.03"
	16.0"	3.9"	2.9"	16.71"

This drawing and/or electronic media containing this drawing is the sole property of the Ridewell Corp. and is loaned with the express condition that it is not to be used in any way deleterious to the interest of the Ridewell Corp. The acceptance of this drawing and/or electronic media containing this drawing will be construed as an acceptance of the foregoing conditions. Drawings and/or electronic media containing this drawing are to be returned to the Ridewell Corp. upon request.

T	1673	ITEM 4 WAS 1137738B301, ITEM 10 WAS 1157738B301	2/8/21	PMB	AAS	CJB
S	12105	ADDED VIEW B-B	9/10/12	G.H.	MDJ	CJB
REV	PROJECT	DESCRIPTION	DATE	BY	CHK	APPD

DRAWN BY: _____
 CHECKED: _____
 APPROVED: _____
 PROJECT NO: _____
 MATERIAL: _____
 SCALE: B - SIZE NTS, D - SIZE NTS
 SEE B.O.M
 TOLERANCES UNLESS OTHERWISE SPECIFIED:
 DECIMAL: .XX ± 0.06, .XXX ± 0.030
 FRACTION: ± 1/16, ANG: X ± 1'
 *WELD TOLERANCES PER ISO WD45-02

RIDEWELL CORPORATION
 PO BOX 4586 SPRINGFIELD, MISSOURI 65808
30,000 LB. CAPACITY OVERSLUNG SUSPENSION
RAR-240-1-15-30-OSW
 PART NO: **2400815**
 SHEET 1 OF 1
 REV: T