

AXLE ADJUSTMENT PROCEDURE:

- AXLE ALIGNMENT SHALL BE IN ACCORDANCE WITH SAE OR TMC RECOMMENDED STANDARDS.
- LOOSEN 1.25 INCH NUT AT ECCENTRIC BOLT & REMOVE ANTI-TURN WASHER.
- TO MOVE AXLE: TURN ECCENTRIC BOLT HEAD IN DIRECTION AXLE IS TO BE MOVED. MAXIMUM MOVEMENT FROM 12 O'CLOCK POSITION IS TO 9 OR 3 O'CLOCK POSITION, FORWARD OR REARWARD.
- WITH ECCENTRIC BOLT AT ITS FINAL SETTING, INSTALL ANTI-TURN WASHER OVER ECCENTRIC BOLT HEAD AND WELD TO HANGER. TIGHTEN 1.25 INCH NUT TO SPECIFIED TORQUE.

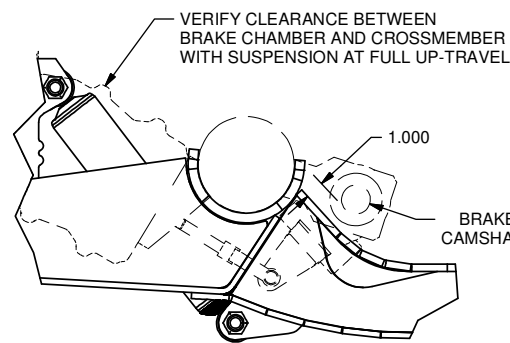
ITEM	SIZE	TORQUE	
		(FT-LB)	(N-M)
PIVOT BOLT/NUT	1 1/4-7	1000	1356
SHOCK BOLT/NUT	3/4-10	200	271
AIR SPRING NUT	3/4-16	50	68
AIR SPRING BOLT	1/2-13	25	34

NOTES:

- MAIN PIVOT FASTENERS WILL BE SHIPPED WITH MINIMAL TORQUE APPLIED. IT IS THE INSTALLER'S RESPONSIBILITY TO TIGHTEN FASTENERS TO SPECIFIED TORQUE AFTER AXLE IS ALIGNED. TORQUE VALUES REFLECT LUBRICATED THREAD CONDITION (NUTS ARE PRE-LUBED).
- SUSPENSION FASTENERS TO BE RETORQUED INITIALLY AT 6,000 MILES (9,656 KM) AND 50,000 MILES (80,467 KM) INCREMENTS THEREAFTER.
- FOR AXLE TO SUSPENSION WELDING SEE RIDEWELL WELD PROCESS #1
- SUGGESTED CROSSMEMBER LOCATION AND SIZE ARE GIVEN. SIZE AND SHAPE MAY VARY WITH THE TRAILER DESIGN AND ARE THE RESPONSIBILITY OF THE TRAILER OEM.
- STATED DOWN TRAVEL REFLECTS SUSPENSION WITH SHOCK ABSORBERS AT MAXIMUM EXTENSION AND WITH UNPRESSURIZED AIR SPRINGS. STATED UP TRAVEL REFLECTS SUSPENSION WITH AIR SPRINGS AT BUMPER CONTACT.
- STATED CAPACITY RATING FOR SUSPENSION ONLY. RATING OF AXLE, BRAKES, AND WHEEL END EQUIPMENT PER MANUFACTURER.
- CONTACT RIDEWELL FOR AIR CONTROL KIT OPTIONS.
- INSTALLER MUST SET THE SUSPENSION TO THE SPECIFIED MOUNTING HEIGHT BEFORE TORQUING THE PIVOT BOLT TO PREVENT PRE-LOADING THE RUBBER IN THE BUSHING.
- IN THE EVENT OF BUSHING REPLACEMENT, HUCK FASTENERS MAY BE REPLACED WITH 3/4-10 GRADE 8 HARDWARE TORQUED AT 280-330 FT.LB. FOR BUSHING REPLACEMENT ORDER KIT #6040029.

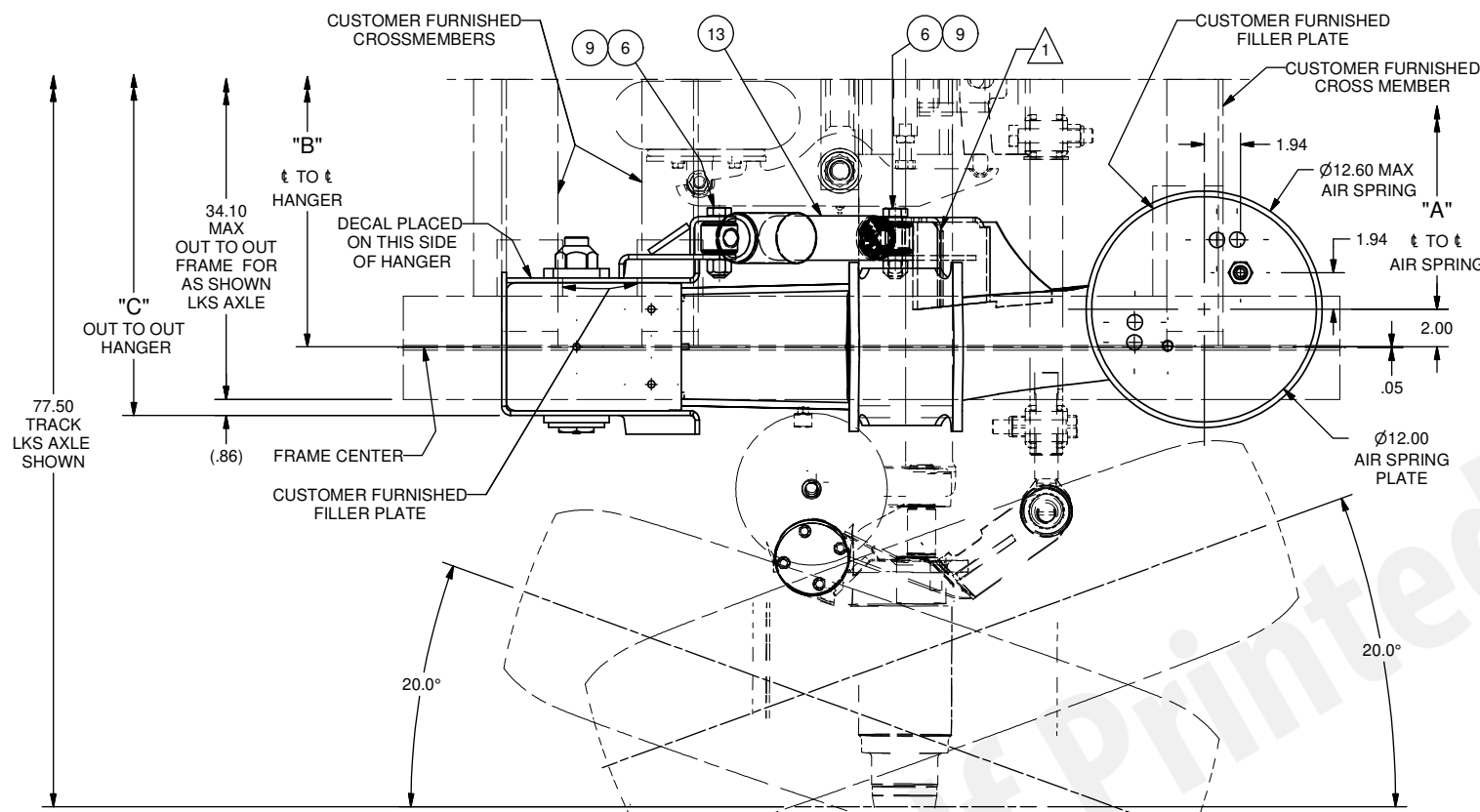
CLEARANCE SPECIFICATIONS:

- 1.5 INCH MINIMUM CLEARANCE REQUIRED BETWEEN TOP OF TIRE AND BOTTOM OF TRAILER STRUCTURE WHEN AXLE IS AT BUMPER CONTACT.
- 2.0 INCHES MINIMUM CLEARANCE REQUIRED BETWEEN INSIDE OF TIRE AND TRAILER STRUCTURE FOR LATERAL MOVEMENT.
- 0.75 INCH MINIMUM CLEARANCE MUST BE MAINTAINED AROUND AIR SPRING WHEN IT IS AT MAXIMUM DIAMETER.



SECTION B

5.50 INCH MOUNTING HEIGHT SHOWN
STRAIGHT AXLE SHOWN

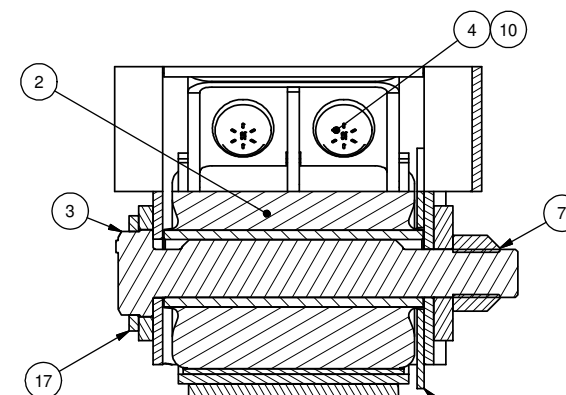


PARTS REQUIRED FOR 6000074 (CARTON OF PARTS)					
PARTS REQUIRED FOR 3010717 (RH HGR/LBA)					
PARTS REQUIRED FOR 3010716 (LH HGR/LBA)					
ITEM	PART NO.	DESCRIPTION	QTY	QTY	QTY
1	1001R12692G	AIR SPRING 1R12-692			2
2	1117680B075	BUSH ASSY 60 DURO MONOPIVOT	1	1	
3	1137694B000	ECCENTRIC BOLT (FORGED) 9.5"	1	1	
4	1130090	HUCK BOLT 3/4X.75X1.12 GL GR8	2	2	
5	1145383B105	HHCS 1/2" 13NC 1-1/4" L GRADE 5, ZINC PLATE			6
6	1147698B105	HHCS 3/4" 10NC 3-1/4LG GRADE 5, ZINC PLATE			4
7	1150033	L'NUT 1-1/4"-7UNC -2B HVY	1	1	
8	1150558B102	NUT 3/4" 16NF GRD 2			2
9	1150709B105	L'NUT 3/4" 10NC OVAL 3/4" HI			4
10	1150059	HUCK COLLAR 3/4" BOBTAIL	2	2	
11	1160556B100	L'WASHER 1/2" S/T MED ZINC PLATE			6
12	1167680B000	WASHER-UHMW 6.25X2.125X.188 BLUE	1	1	
13	1270563B003	SHOCK ASSY 6" MONROE			2
14	3267744C106	HANGER ASSY - LH	1		
	3267744C206	HANGER ASSY - RH		1	
15	4280061	LOAD BEAM ASSEMBLY	1		
	4280062	BEAM ASSY - RH		1	
16	7000407	AIR SPRING MOUNTING PLATE			2
17	9003092B000	ANTI-TURN WASHER			2

REFERENCE NOTE FOR ORDERING BEAM/BUSH ASSY:
5970095 - LH BEAM/BUSH ASSEMBLY (SHOWN)
5970096 - RH BEAM/BUSH ASSEMBLY (OPPOSITE)

NOTES:

- 1 GRIND TOP OF SHOCK BRACKET LOCALLY IF NECESSARY FOR CLEARANCE WITH TORPRESS ARMS.

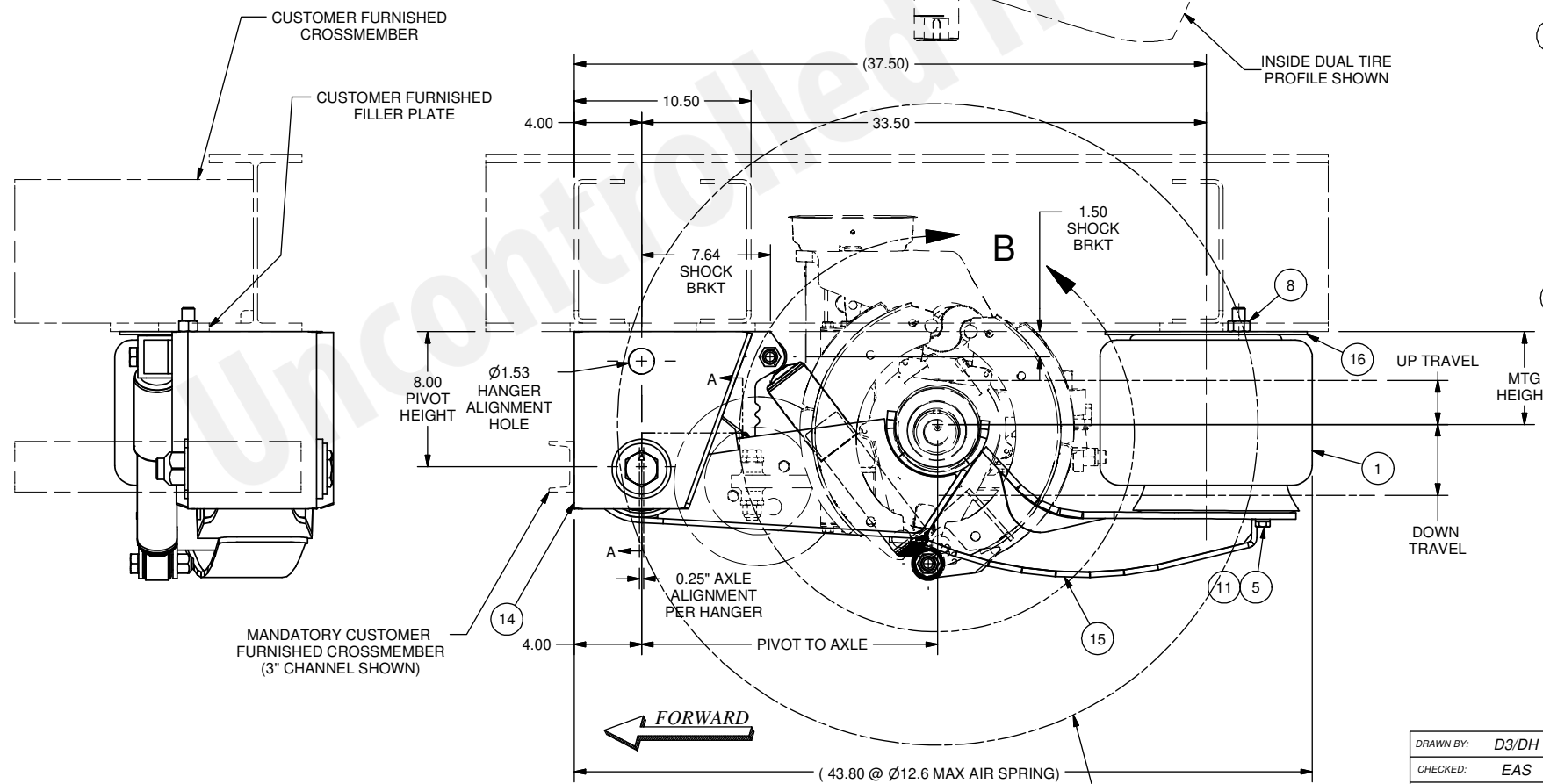


SECTION A-A

MODEL NUMBER	MTG HEIGHT	UP TRAVEL	DOWN TRAVEL	PIVOT TO AXLE
RAR-240LKS-1-6-25-USW	5.5"	2.6"	4.2"	17.57"
	6.0"	3.1"	3.7"	17.64"
	6.5"	3.6"	3.2"	17.69"
	7.0"	4.1"	2.7"	17.72"

* SUPER SINGLE TIRES

TRACK WIDTH (IN)	77.50		* 84.00
	LKS	NON-STEER	LKS
DIMENSION "A" (IN)	24.50	37.00	35.50
DIMENSION "B" (IN)	28.50	41.00	39.50
DIMENSION "C" (IN)	35.81	48.31	46.81



5.50 INCH MOUNTING HEIGHT SHOWN
77.5 IN TRACK IMT LKS AXLE SHOWN

275/70R22.5 SHOWN
MAX TIRE SIZE FOR 77.5 TRACK LKS AXLE WITH DUAL TIRES

DRAWN BY:	D3/DH	7/20/2000
CHECKED:	EAS	9/25/2000
APPROVED:	EAS	9/25/2000
PROJECT NO:	00134	
SCALE:	B - SIZE D - SIZE	NTS NTS
MATERIAL:	SEE B.O.M.	Weight 375.00 lbmass

TOLERANCES UNLESS OTHERWISE SPECIFIED:	DECIMAL: X ± 0.1 XX ± 0.06 XXX ± 0.030	FRAC: ± 1/16 ANG: X ± 1' XXX KCC
*WELD TOLERANCES PER ISO W045:02		

RIDEWELL CORPORATION
PO BOX 4586 SPRINGFIELD, MISSOURI 65808

TITLE:
25,000 LB. CAPACITY
UNDERSLUNG SUSPENSION
RAR-240LKS-1-6-25-USW

SHEET 1 OF 1 PART NO: 2400111 REV: AD

This drawing and/or electronic media containing this drawing is the sole property of the Ridewell Corp. and is loaned with the express condition that it is not to be used in any way deleterious to the interest of the Ridewell Corp. The acceptance of this drawing and/or electronic media containing this drawing will be construed as an acceptance of the foregoing conditions. Drawings and/or electronic media containing this drawing are to be returned to the Ridewell Corp. upon request.

REV	PROJ / ECR	DESCRIPTION	DATE	BY	CHK	APPD
AD	1673	ITEM 4 WAS 1137738B301, 10 WAS 1157738B301	1/5/21	AAS	GWH	CJB
AC	1568	ITEM 1 WAS 1000003	12/27/19	CAG	AAS	CJB
AB	15101	35.50" IN TRACK WIDTH CHART (LKS) WAS 37.00	6/24/2015	G.H.	MDJ	CJB