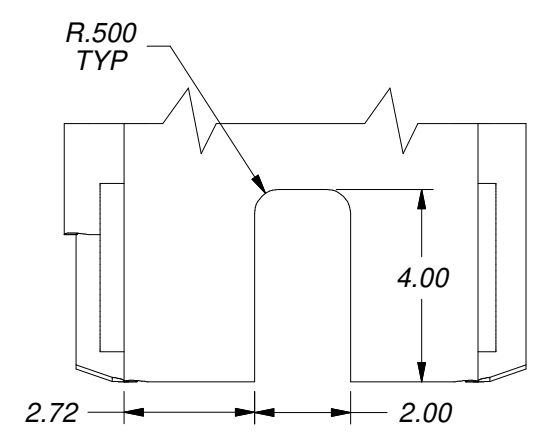
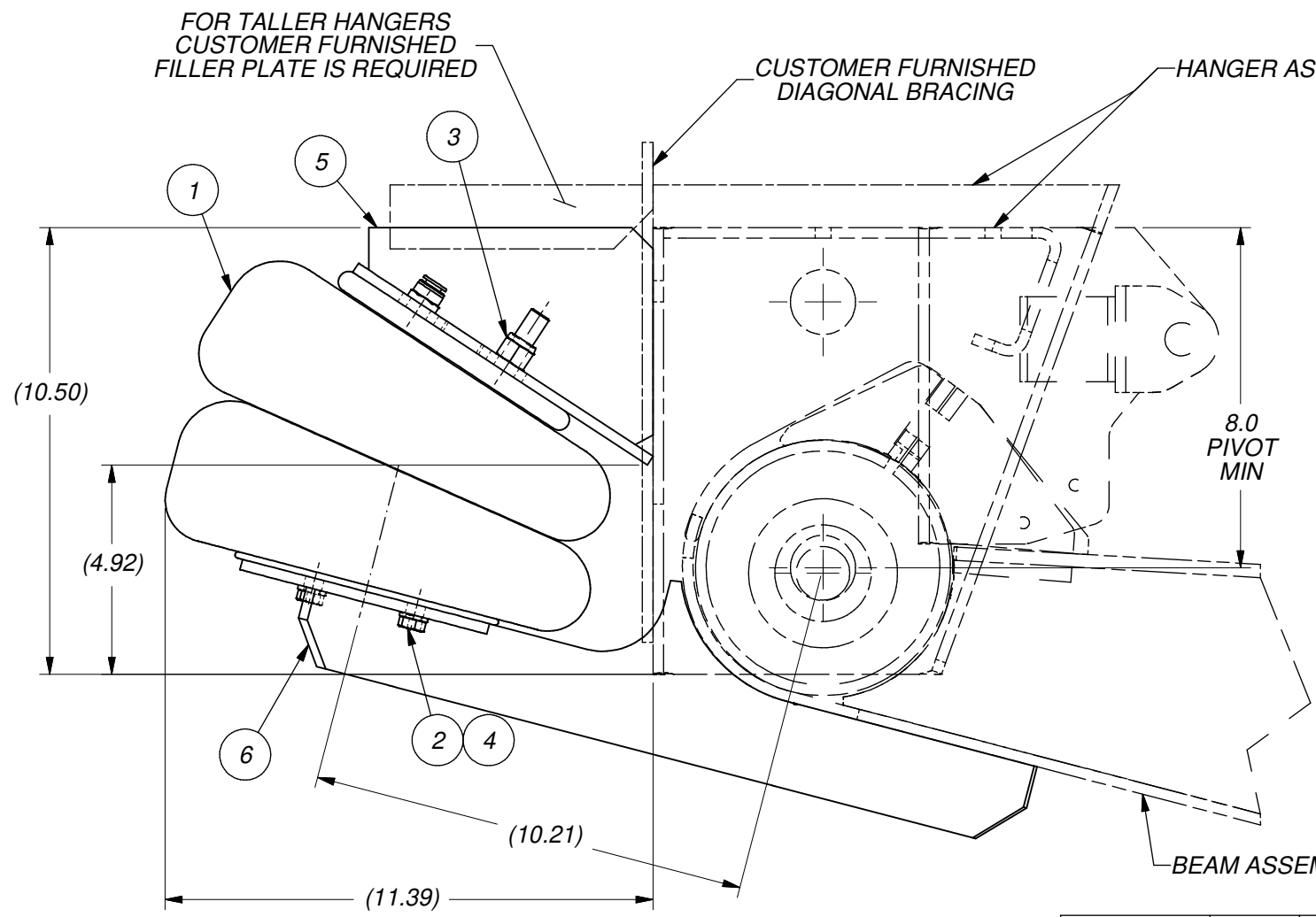
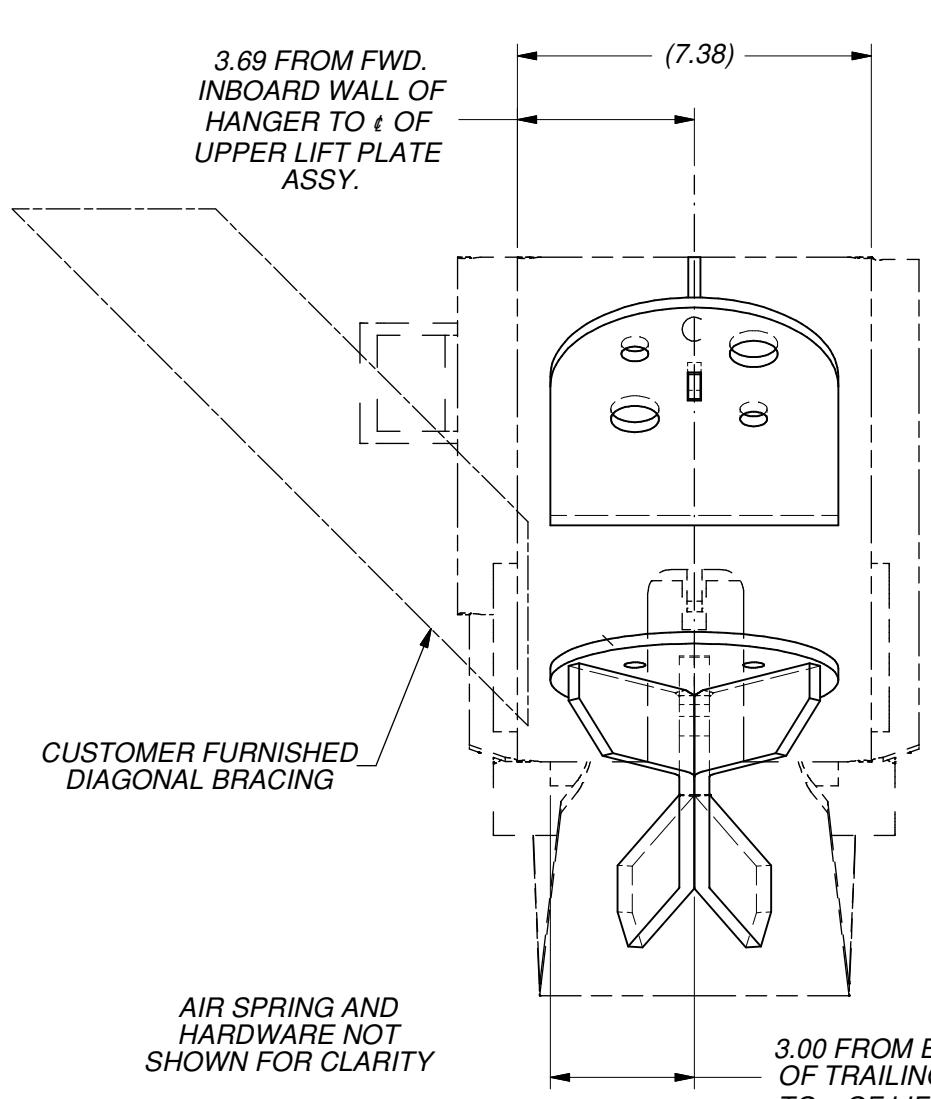


Parts List			
ITEM	PART NO.	DESCRIPTION	QTY
1	1000034	AIR SPRING	2
2	1140674B105	HHCS 3/8" 16NC 1"LG, GR 5, ZINC PLATE	4
3	1150555B112	L'NUT 1/2" 13NC NYL ,GR 2, ZINC PLATE	4
4	1160675B100	L'WASHER 3/8" S/T MED,ZINC PLATED	4
5	5970069	UPPER LIFT PLATE ASSEMBLY	2
6	5970070	LIFT ARM ASSEMBLY	2

NOTES:
 1. TORQUE ALL FASTENERS TO 25 FT-LBS
 2. MIN AXLE SPACING FOR REAR LIFT WITH STD 25K RAR-240-UNDERSLUNGS IS 54"



FIELD MODIFY FOR HANGERS WITHOUT CUTOUT. SHOCK BRKT NOT SHOWN FOR CLARITY

This drawing and/or electronic media containing this drawing is the sole property of the Ridewell Corp. and is loaned with the express condition that it is not to be used in any way deleterious to the interest of the Ridewell Corp. The acceptance of this drawing and/or electronic media containing this drawing will be construed as an acceptance of the foregoing conditions. Drawings and/or electronic media containing this drawing are to be returned to the Ridewell Corp. upon request.

REV	PROJ / ECR	DESCRIPTION	DATE	BY	CHK	APPD
H	22102	UPDATED HANGER TO 1 PC SHELL, REVISED DIMS. REMOVED CATERPILLARS	3/3/22	GW	AAS	CJB
G	FT1886	ITEM 1 WAS P/N 1003586948C	7/1/2020	GW	AAS	BC
F	10102	REVISED 3.00 DIM AND TITLE.	8/18/10	G.H.	MDJ	CJB
E	08102	REDRAWN IN INVENTOR	12/01/08	G.H.	MDJ	CJB
D	06102	REVISED NOTES, CLARIFIED VIEWS AND DIMENSIONS	8/10/06	CJB	MDJ	CJB
C	00108	ITEM NUMBER 1 WAS 1003586905C (2B9-206 / 20C)	12/28/2000	RJL	WFC	EAS

DRAWN BY:	AAS	3/8/2000
CHECKED:	MDL	3/9/2000
APPROVED:	EAS	3/14/2000
PROJECT NO:	221	
SCALE:	B - SIZE 1/4	D - SIZE
MATERIAL:	SEE BOM	Weight N/A
TOLERANCES UNLESS OTHERWISE SPECIFIED:		
DECIMAL:	X ± 0.1	FRACTION: ± 1/16
	XX ± 0.06	ANG: X ± 1°
	XXX ± 0.030	XXX KCC
	* WELD TOLERANCES PER ISO WD45-02	

RIDEWELL CORPORATION
 PO BOX 4586 SPRINGFIELD, MISSOURI 65808

TITLE: **LIFT KIT, RAR-240 UNDERSLUNG**

SHEET 1 OF 1 PART NO: **2990022** REV: **H**